

VXDIAG VCX NANO GM GDS2 Tech2win Installation Manual

Part I Software Download

Part II Software Installation

Part III Common Installation Errors & Solutions

Part I

Nowadays most computer not have CD Driver, so we canceled CD.
You can download software here:

GDS (2020.07):

https://mega.nz/#F!jN4ISYaA!5Q_p4sZEySxLu6HVPP418A

GDS Patch: (2021.03.01)

https://mega.nz/file/oZ820RCJ#BXRW3mOGCC7mfMjtaJ71AzjwghBlCogoM7RNGWi9K_mE

Tech2Win:

<https://mega.nz/#!tIFWUIxT!XBAFZWEFPhQ3A9MtyPYfT1wojVgB1sEmt2T62nrmQcM>

VM version:

VMware GDS2_2016-10:

<https://mega.nz/#!RRVi1YiR!Cux39gxtbGnzFhKA5LEIEcVjjNNg5Eb2huNxIngEv1E>

VMwareGDS2_2018-01:

<https://mega.nz/#F!Q0Aj1Bq!iW1YeXoS9RjKTK9FEKkkAA>

VMWARE-PLAYER6.0

https://mega.nz/#!dEU3GApQ!WgKNuv3G691mGf8_lxZ9HLEeNmAHUJqIB3DCnKfTq5U

Latest version VX Manager driver can be downloaded here:

<http://www.vxdiag.net/?lang=en>

If still failed to install GDS2/TECH2WIN after reading our manual, please feel free to contact vxdiagshop.com customer service:

www.vxdiagshop.com

Email: sales@vxdiagshop.com
Skype: vxdiag.com
Whatsapp: 0086-18064450969

*For SPS Programming, you need buy online subscription from ACDelco.

Part II

Operating System requirement:

C:// RAM: 4GB and above

O/S: Win7 (32bit/64bit) Pro, Win10 (64bit) Pro,
Don't set it up on Windows Home Version

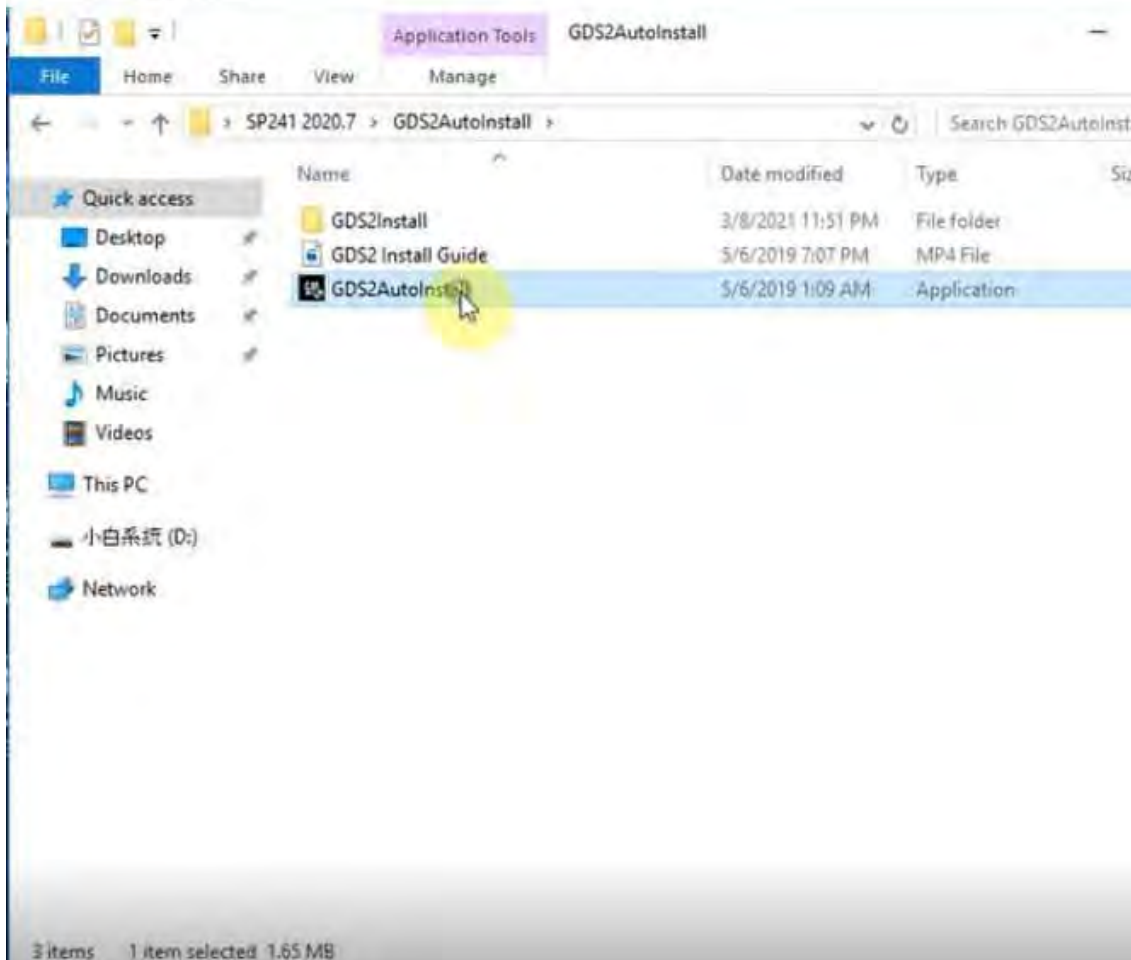
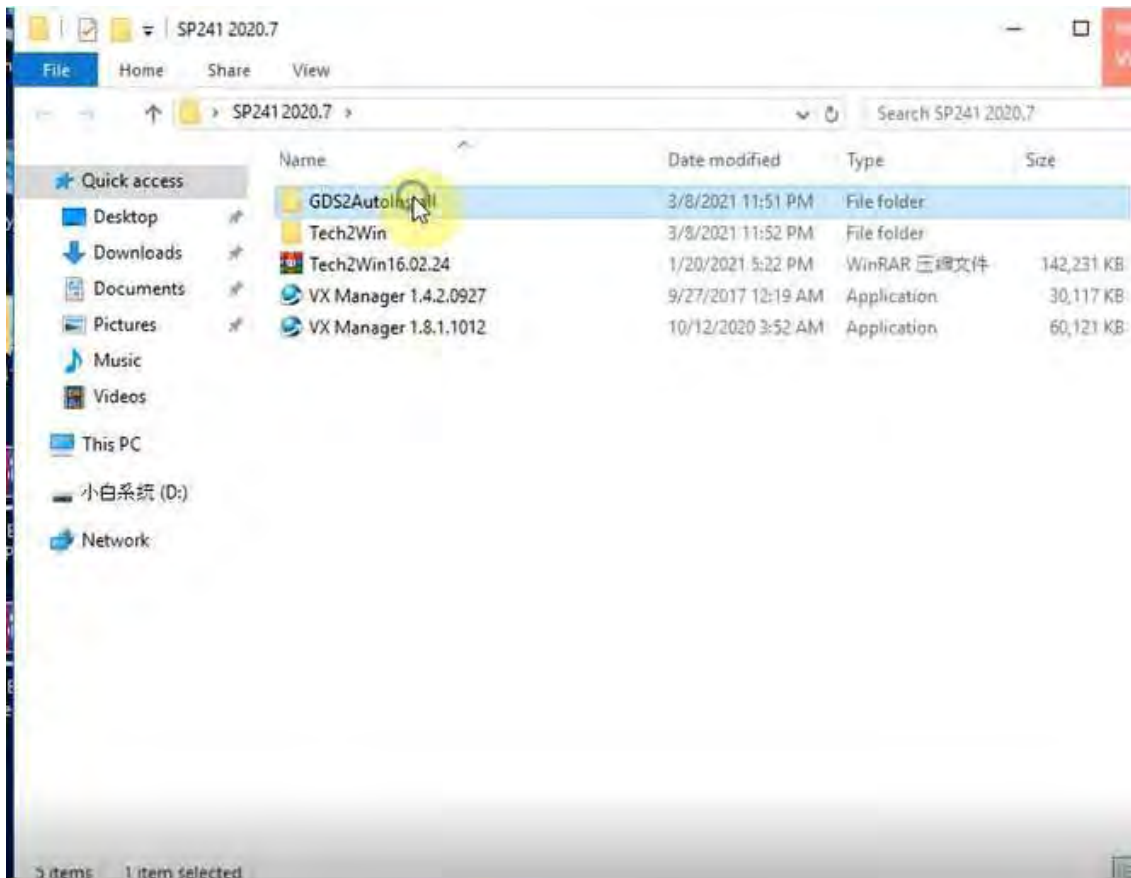
GDS2 and Tech2win can be both installed on WIN10 64Bit OS, If your tech2win unable to install on WIN10 64bit laptop, please try WIN7 32bit computer.

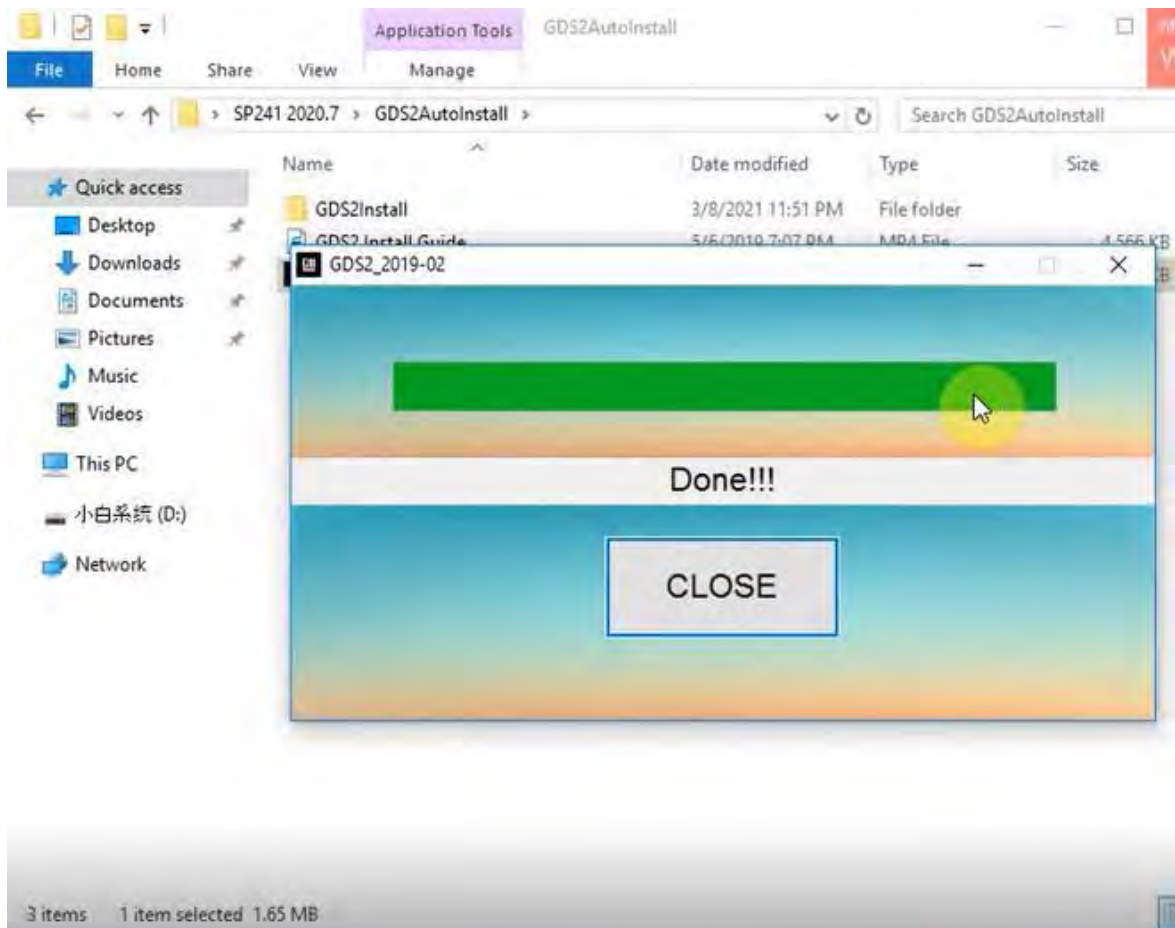
Here is the Win10 installation guide, Win7 share similar innstallation:
Check [Set up VXDIAG GDS2 & Tech2Win on Win7](#)

Video reference: <https://youtu.be/zFFwjrMyDeA>

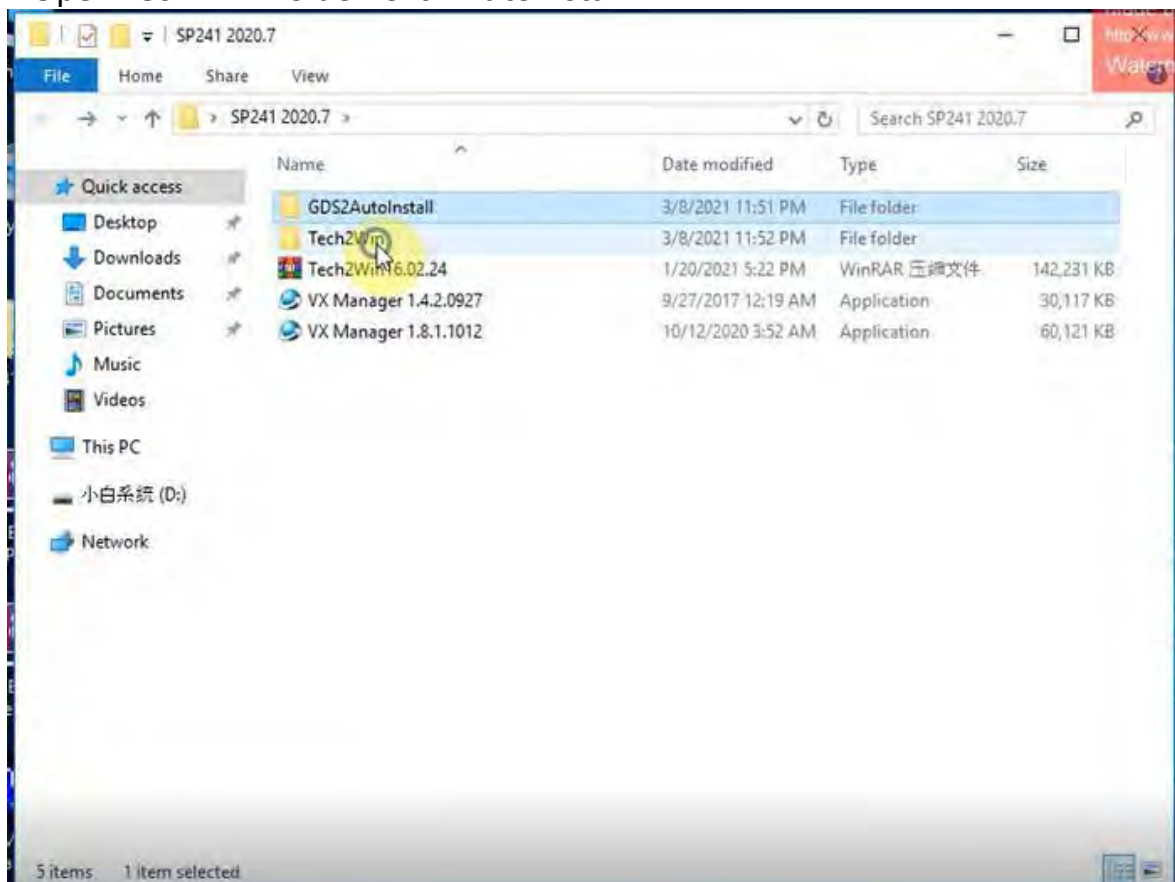
Let's start the GDS2 & Tech2win installation on WIN10 (64Bit):

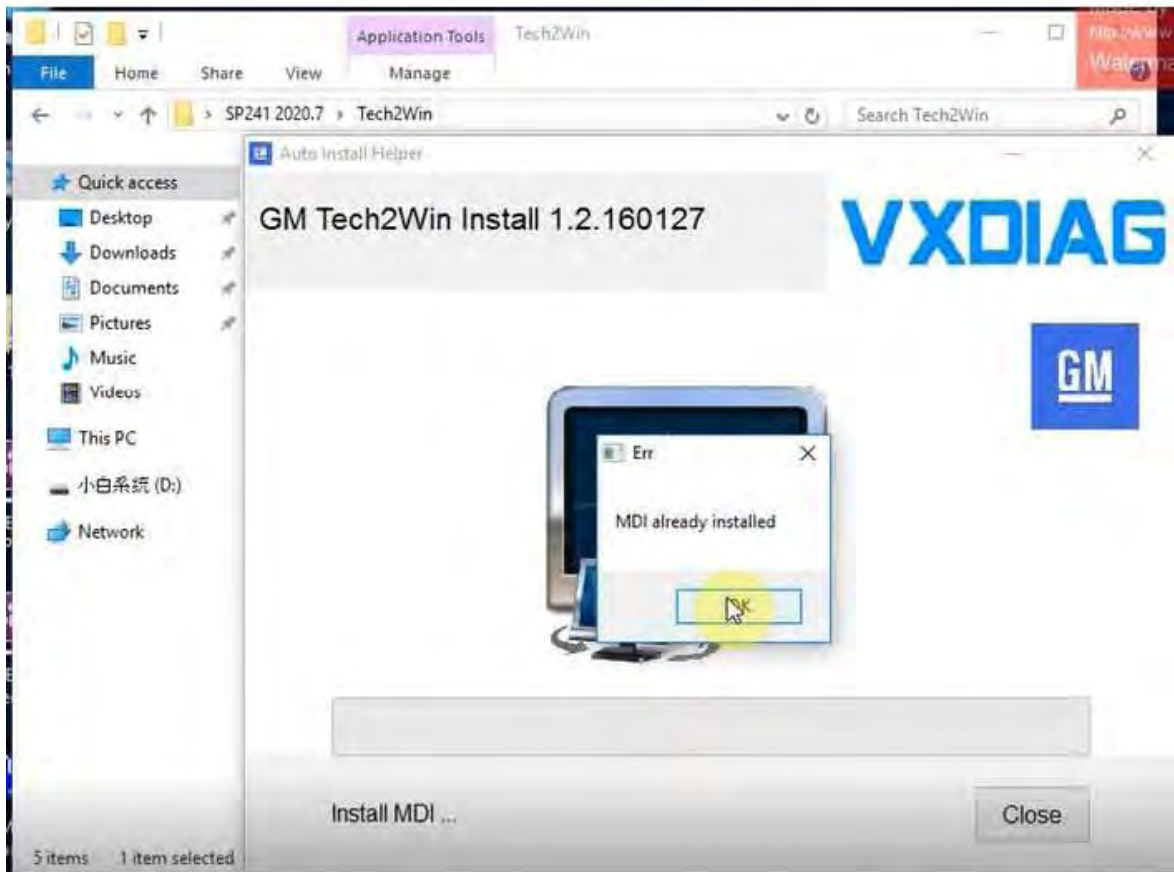
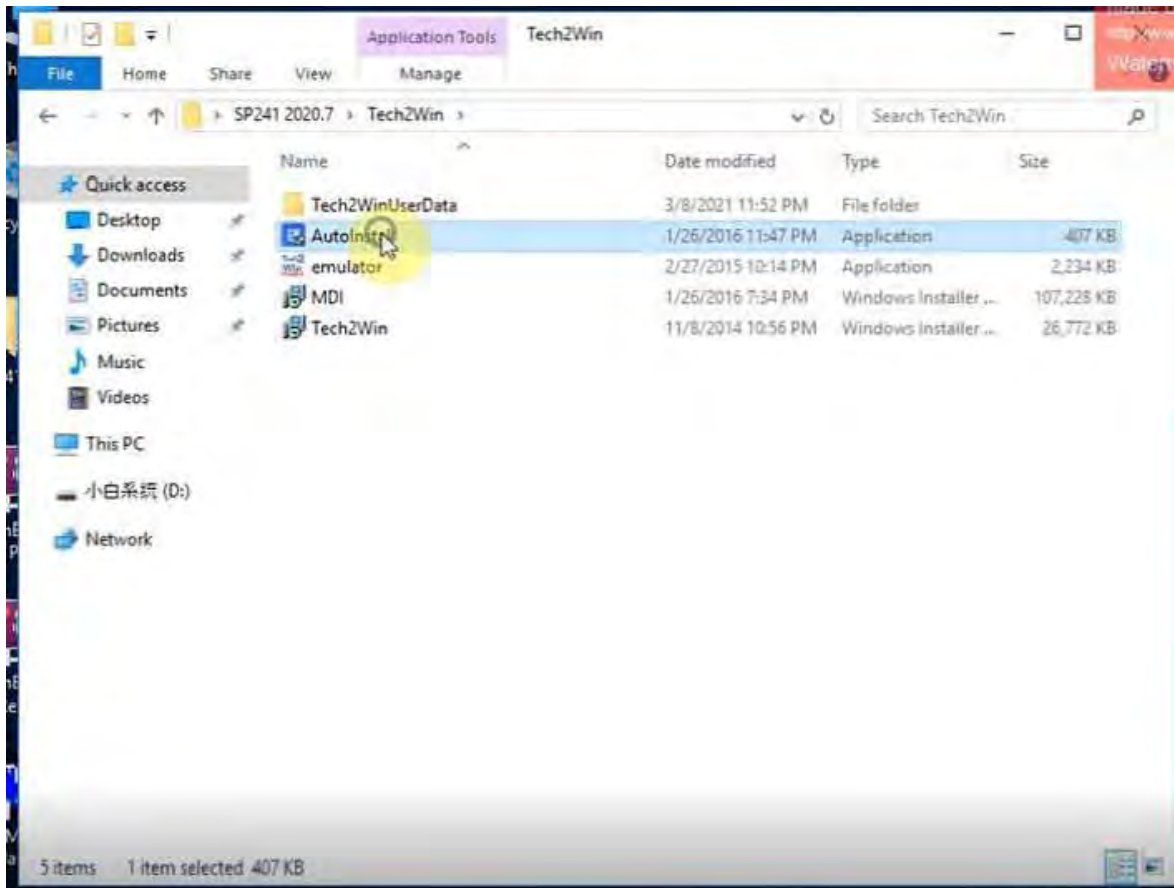
1.First download the Mega file as a folder and unzip it. Then open the **GDS2Autoinstall** folder, click **GDS2Autoinstall**.

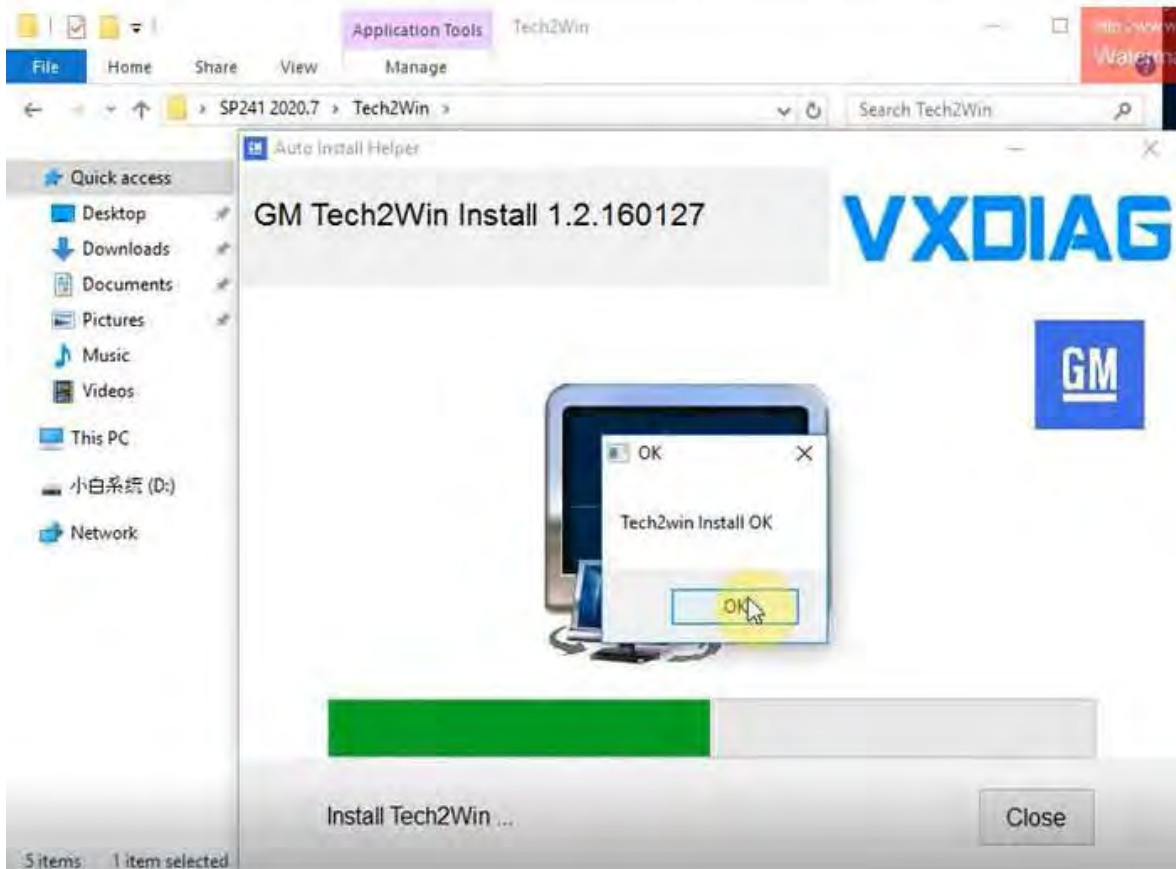
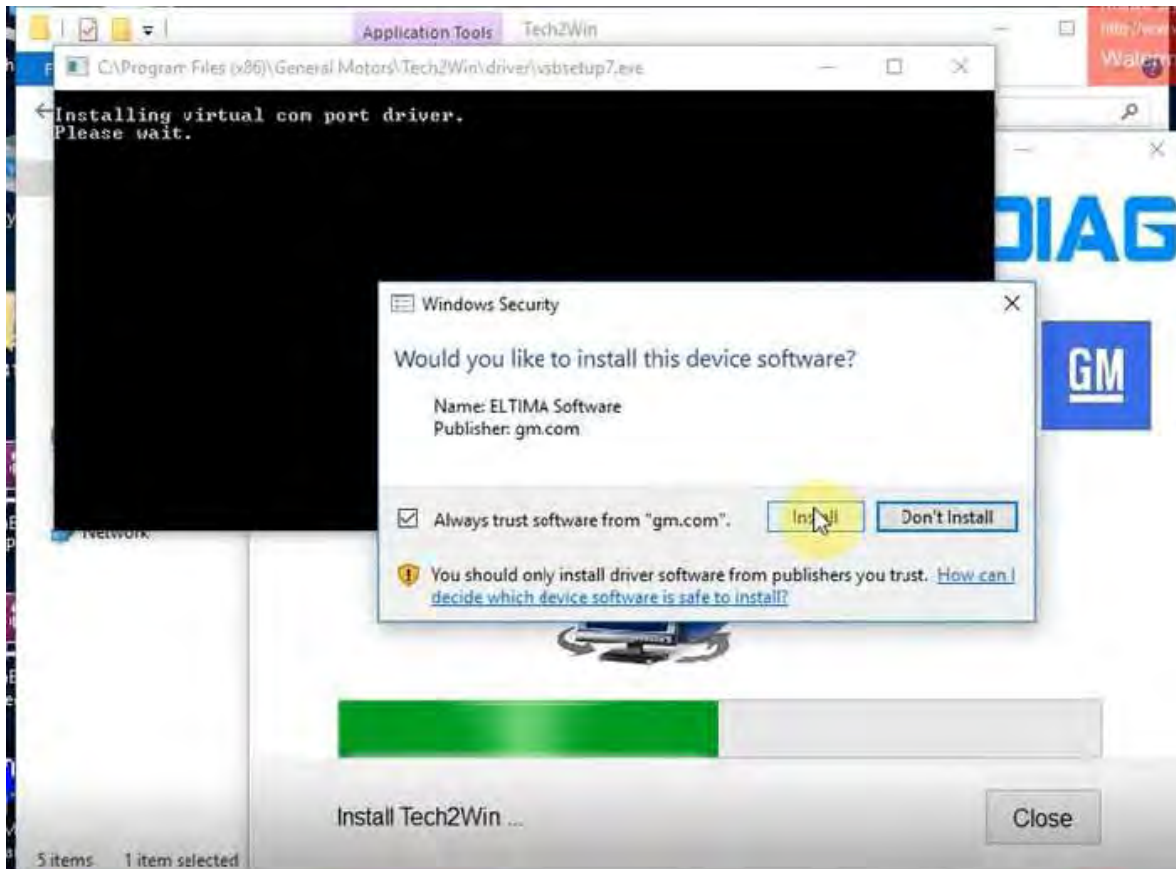




2. Open **Tech2win** folder. Click **Autoinstall**.







3. Install VXMANAGER.

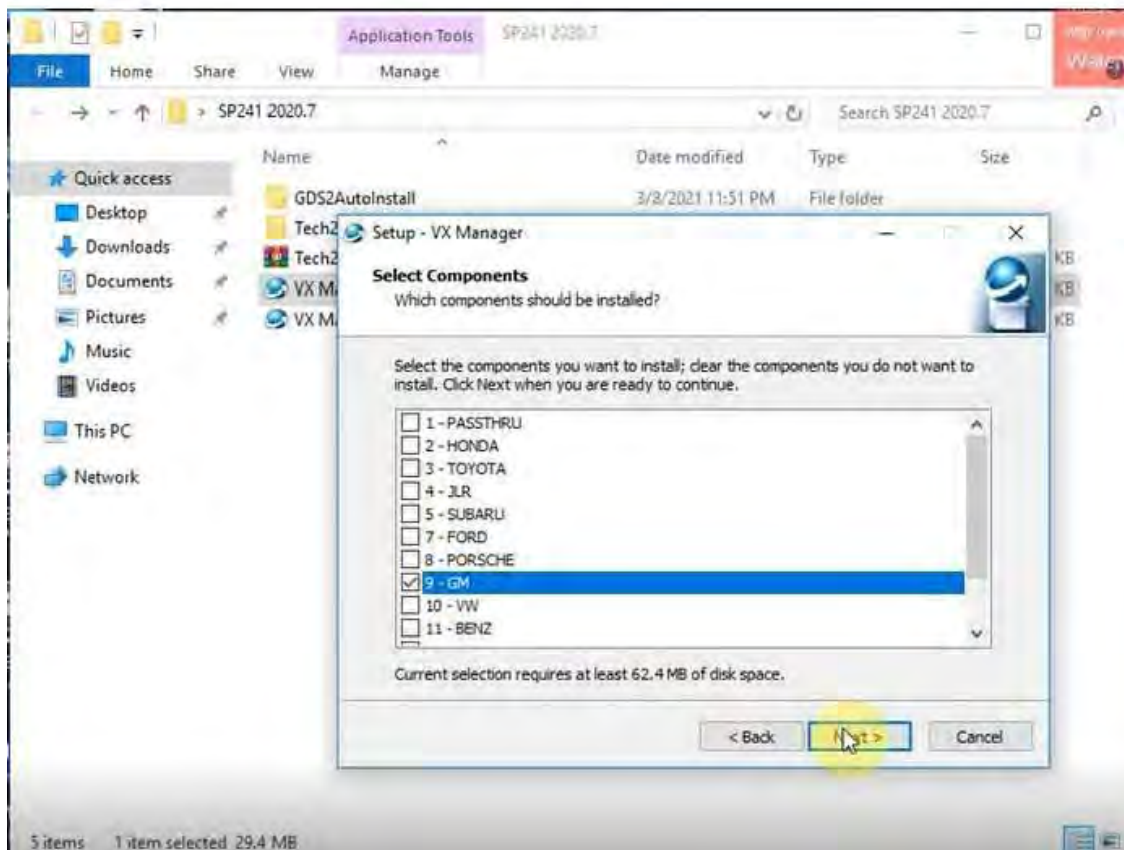
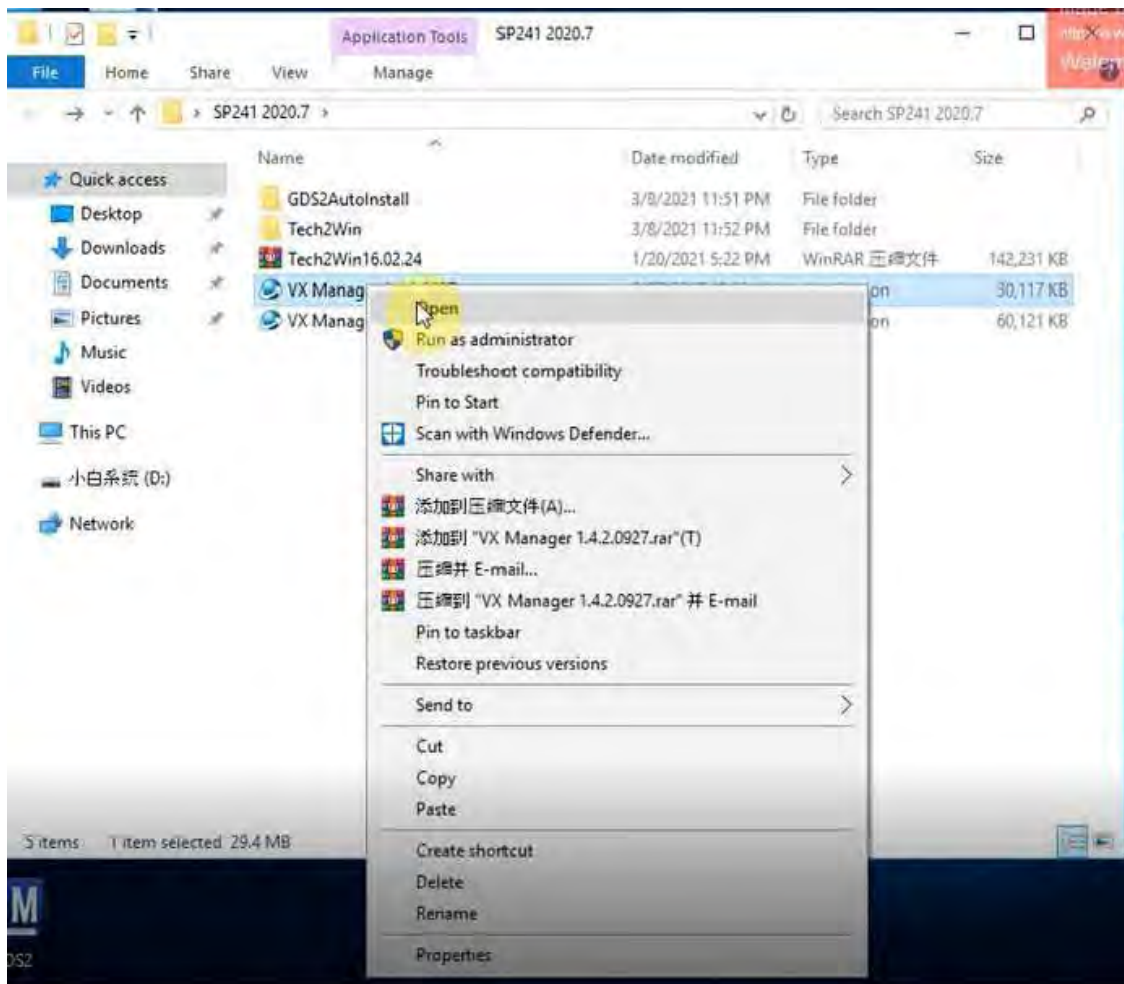
* Note: Direct install newer version VX Manager may cause "no default device"

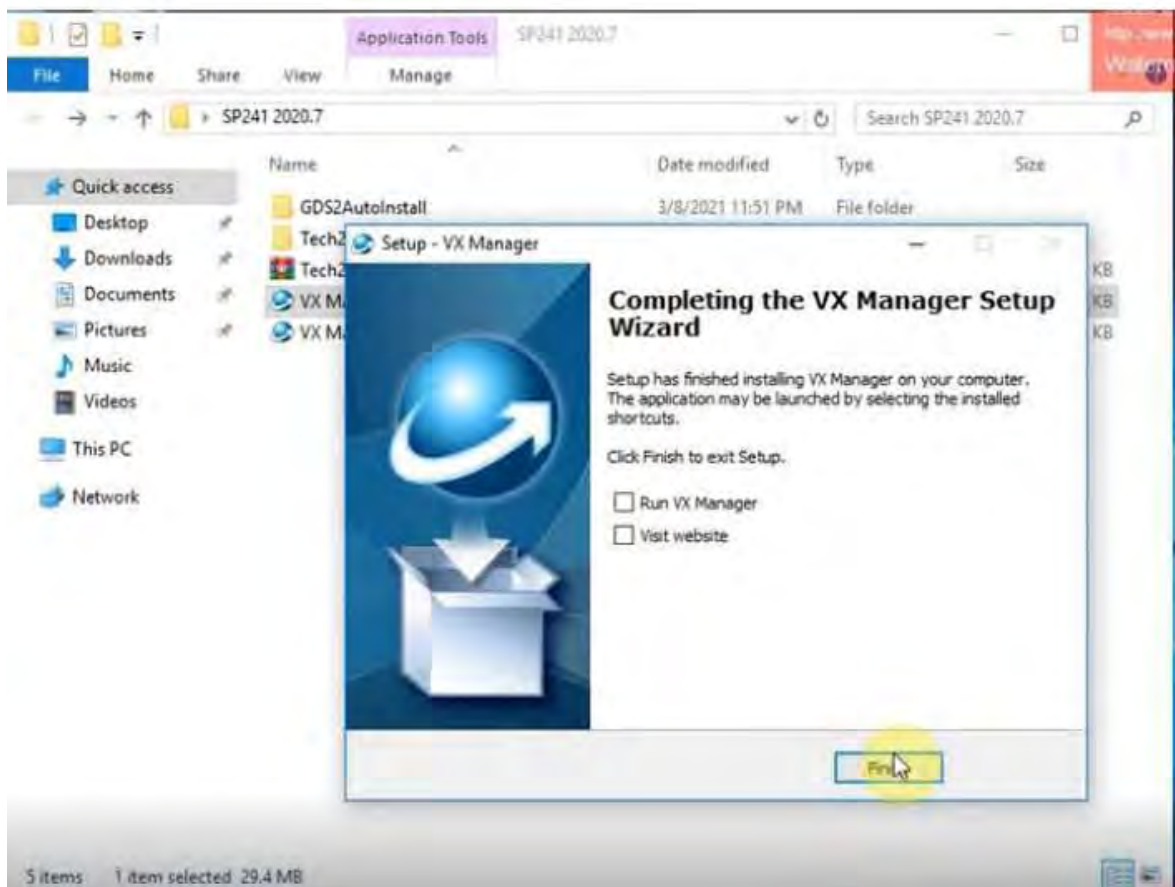
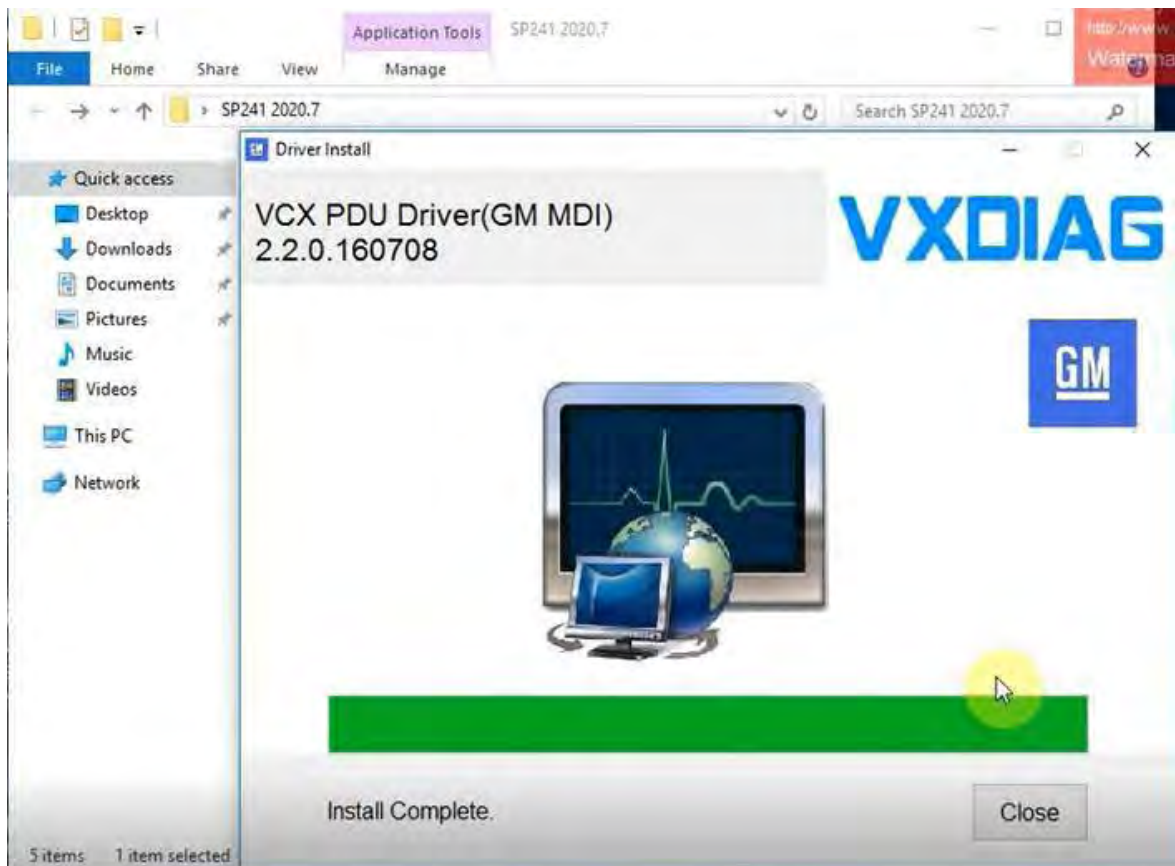
detected” error. **Require install older version vx manager 1.4.1 then install vx manager 1.8.1.**

Software link contains both versions of vx manager.



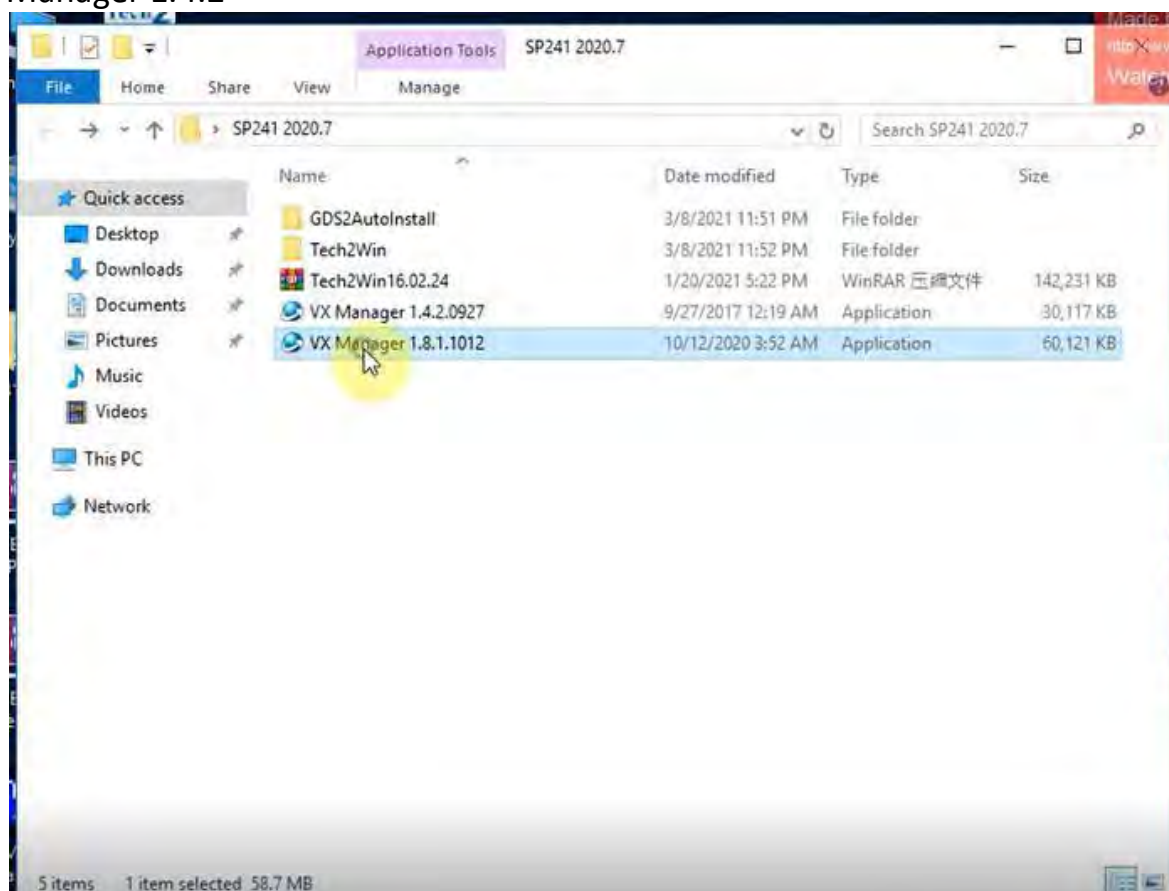
Select GM program to install





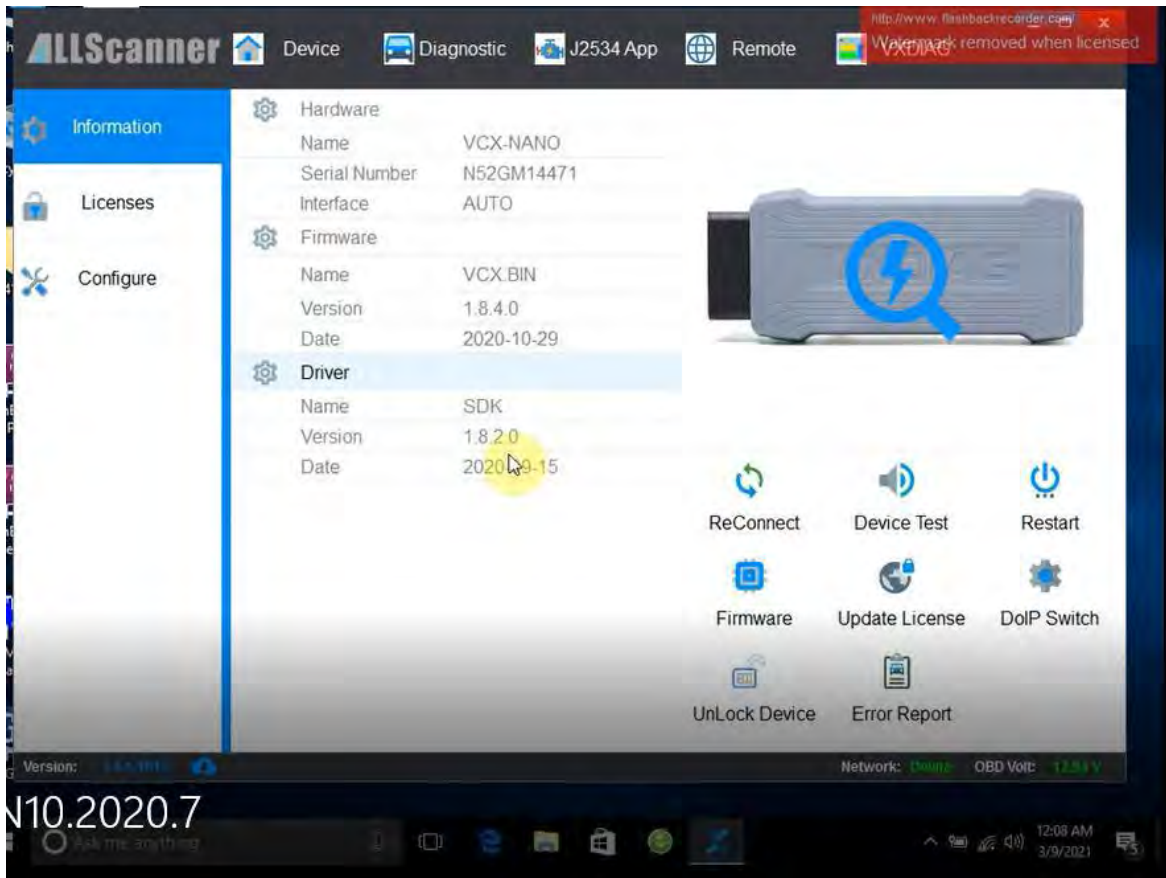
Install latest version VX Manager 1.8.1, exactly same step as you install VX

Manager 1.4.2



4. Start the VX Manager.





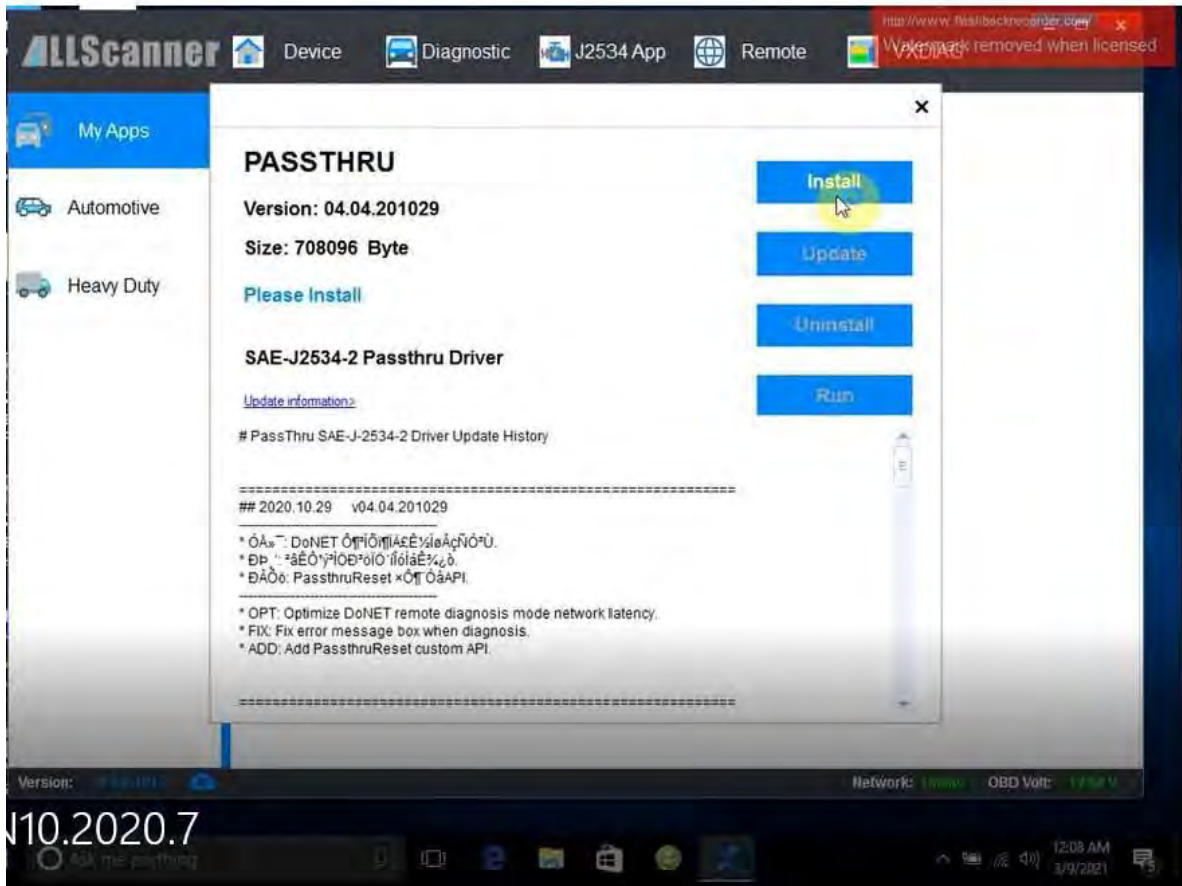
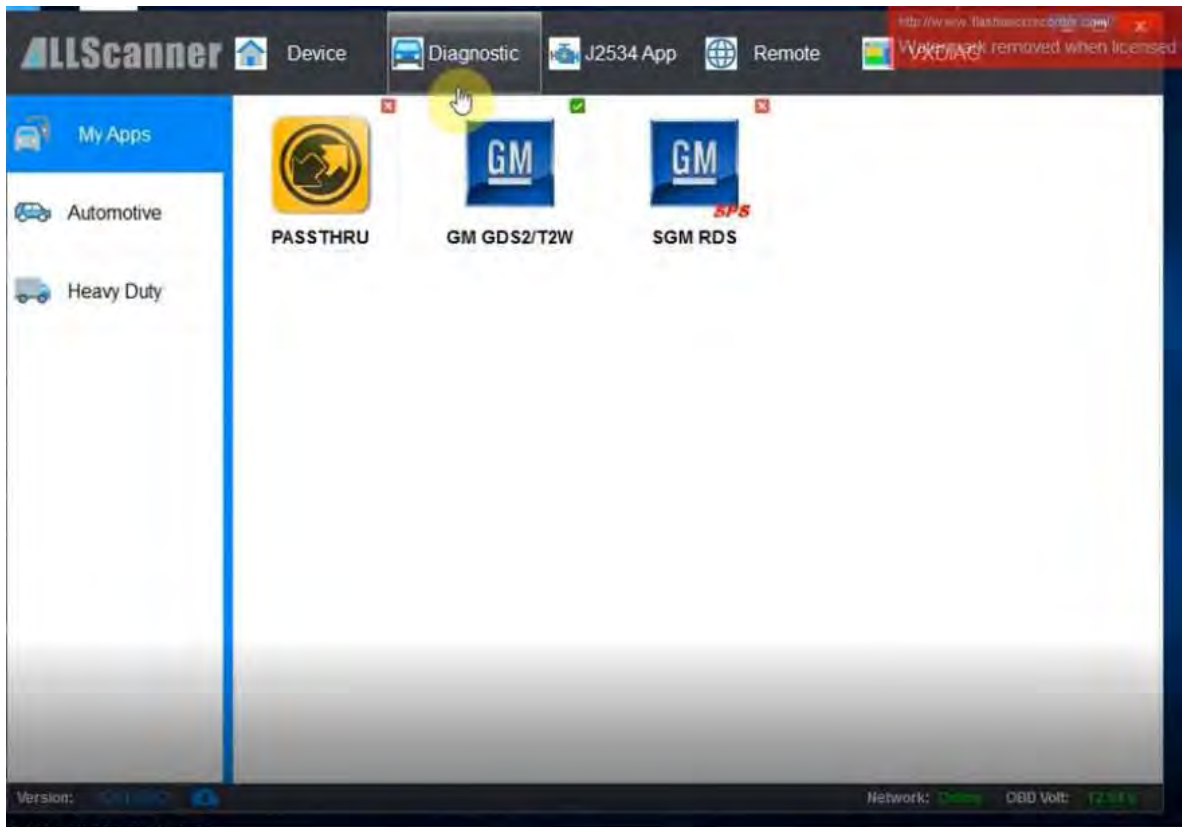
Make sure you your computer network is good. Connect your device by USB cable to computer and OBD2 Socket to your ECU Bench connector or Your car's OBD2 Port.

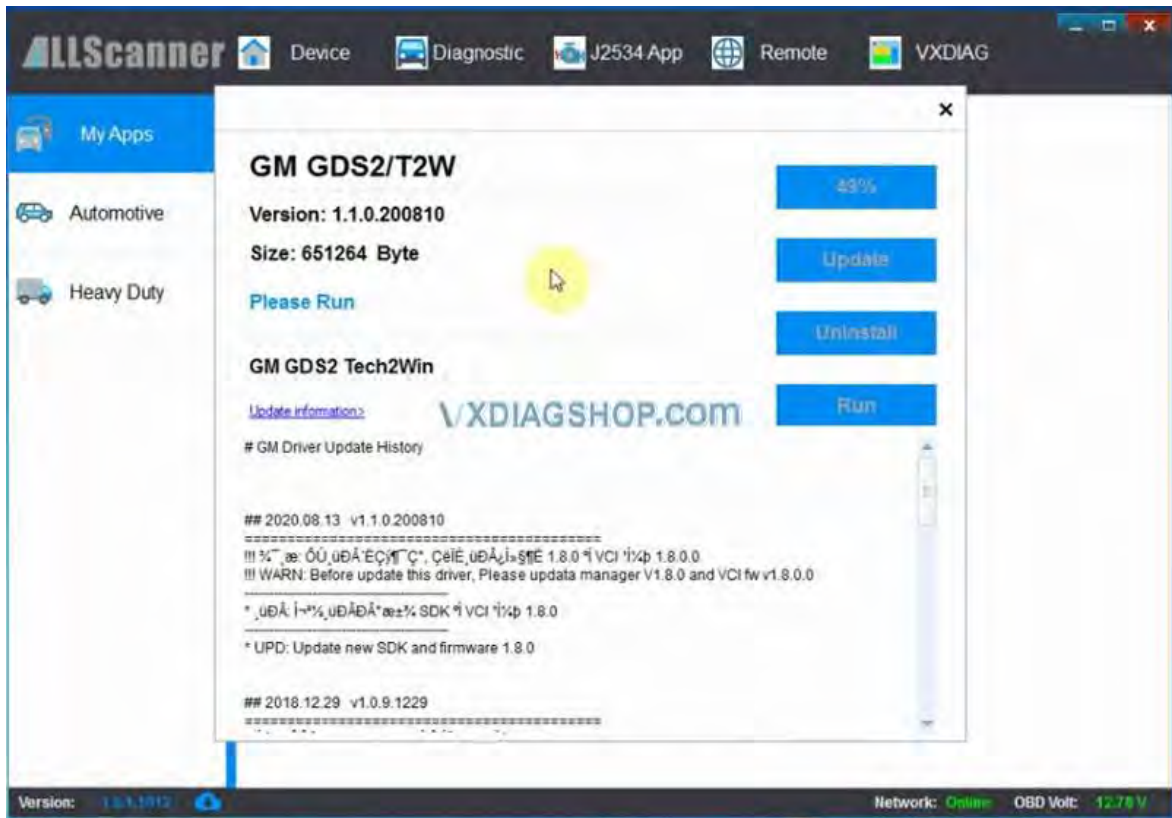
VXDIAG VCX NANO

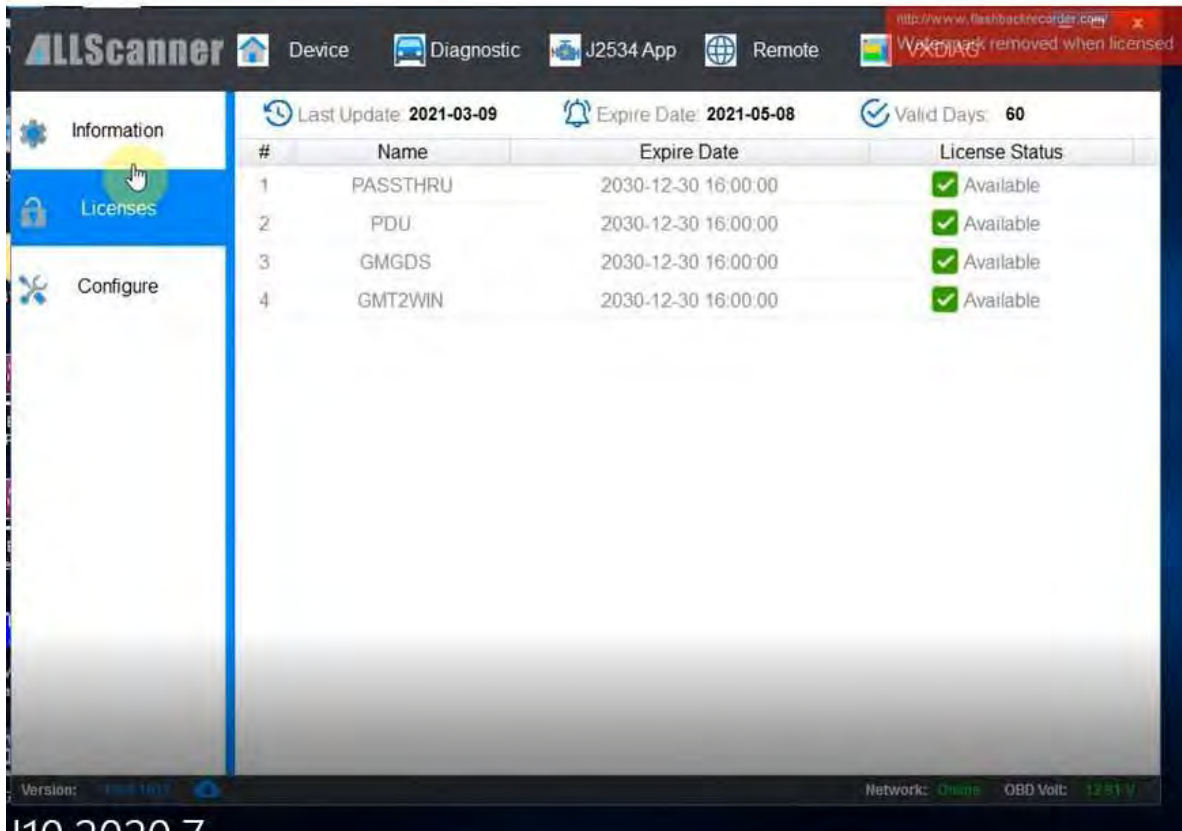
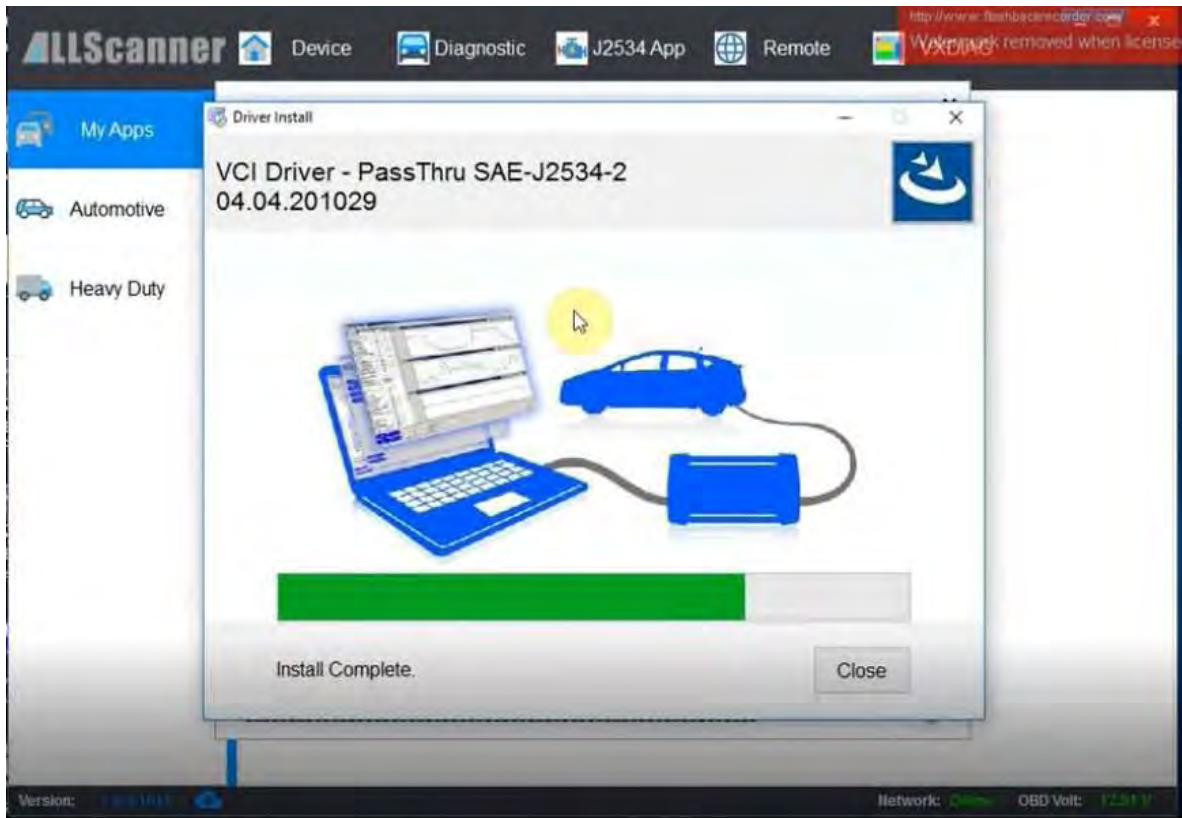
Connecting
Vehicles And Products

Device to connect vehicle and computer

Go to Diagnostic Tab
Install Passthru and GM GDS2/T2W driver



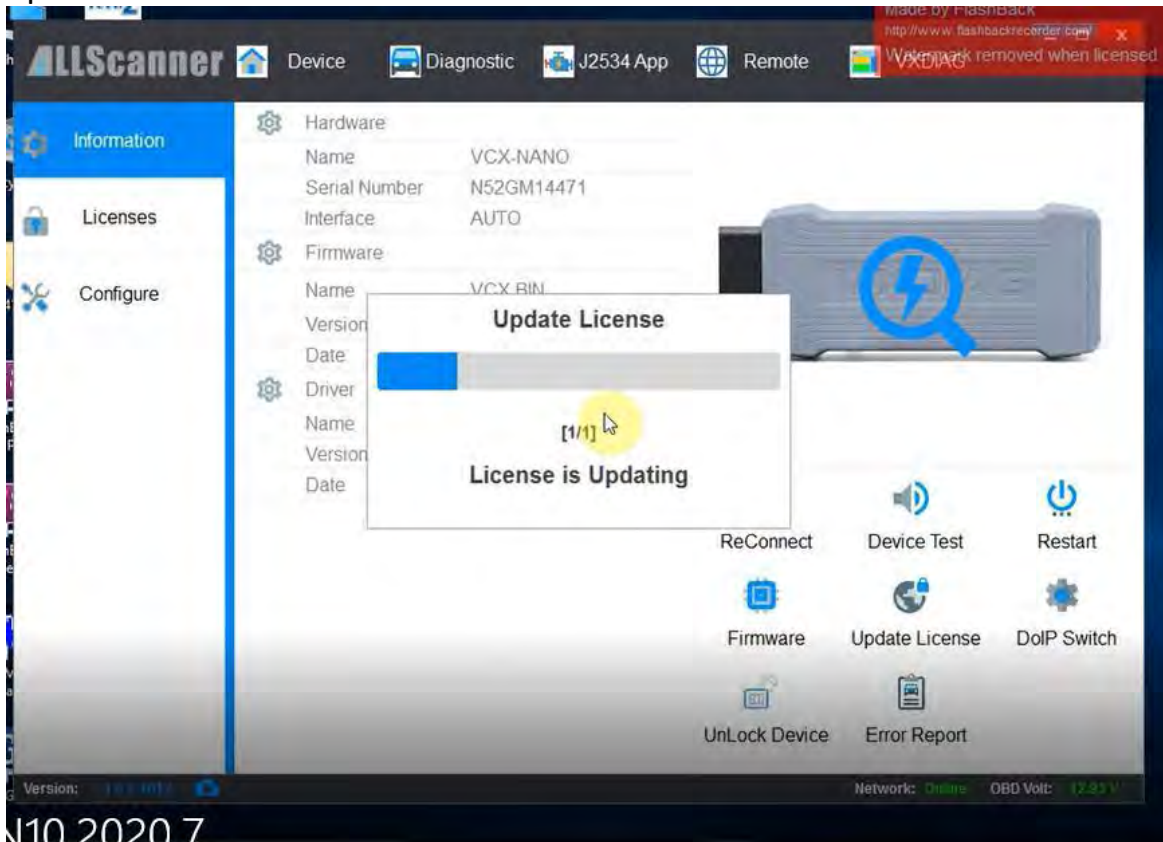




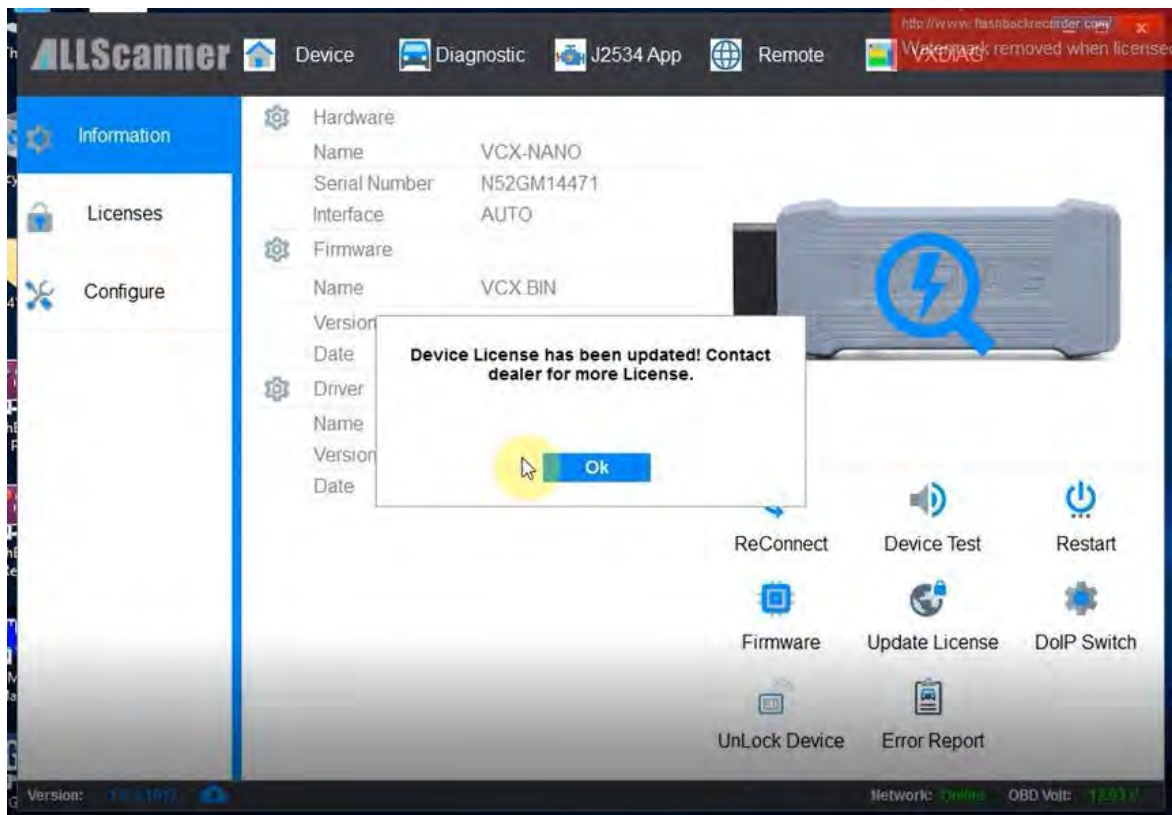
140 2020 7
 Check your device license. If your license expired, download latest vx manager and update firmware & license to renew. Check detail in Part III.



Update firmware.



110 2020 7

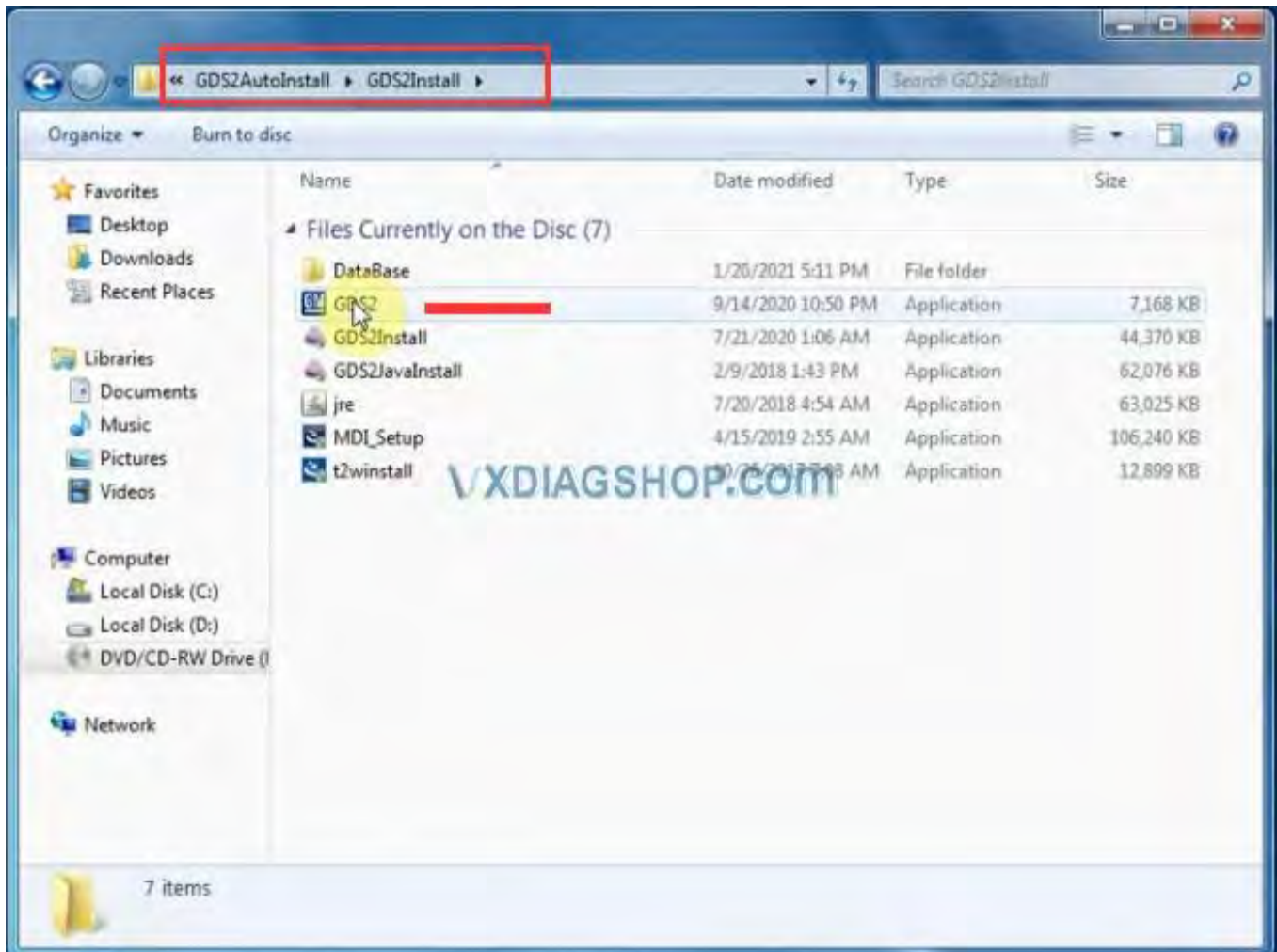


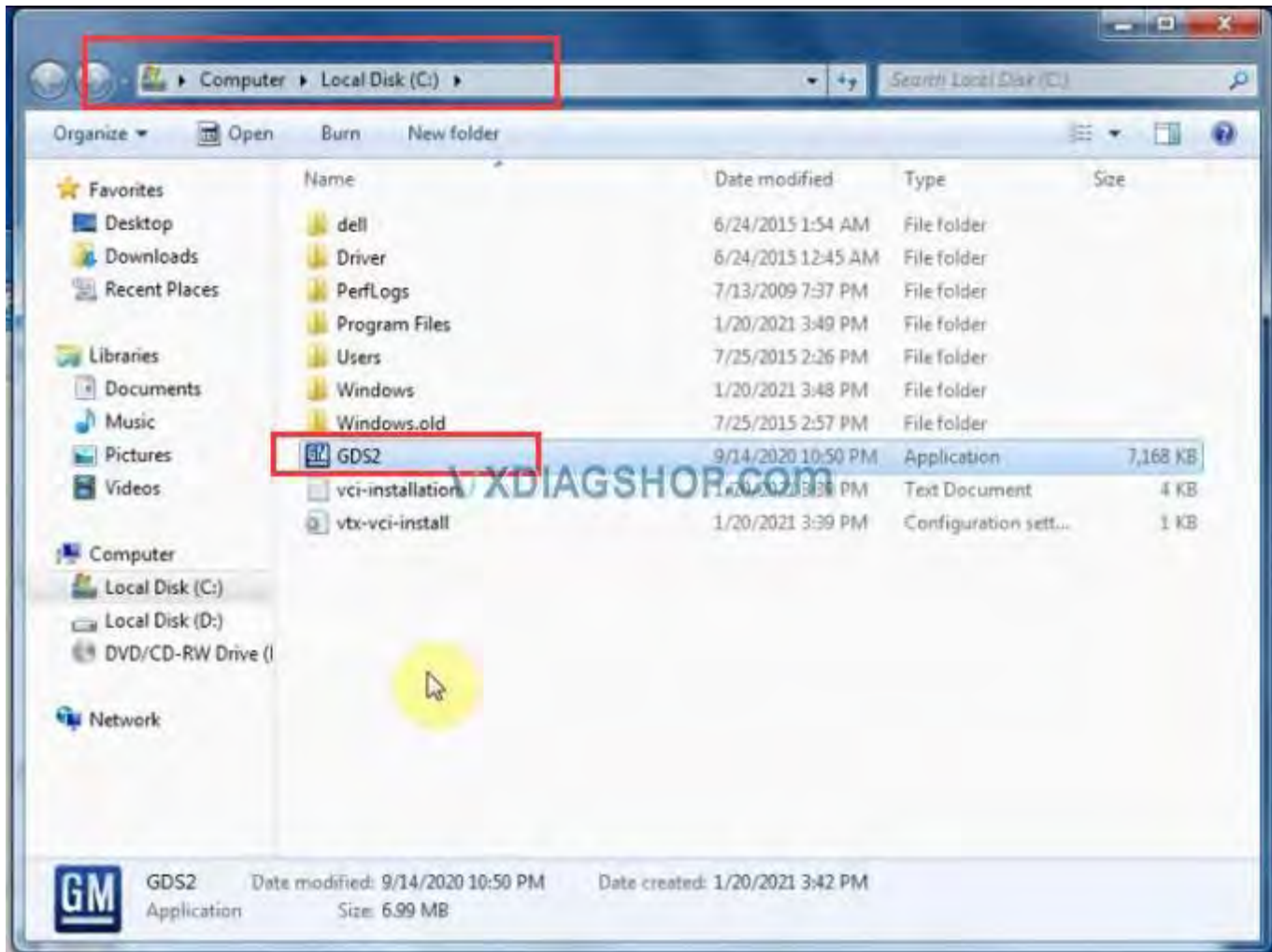
Update license.

Open **GDS2AutoInstall** folder

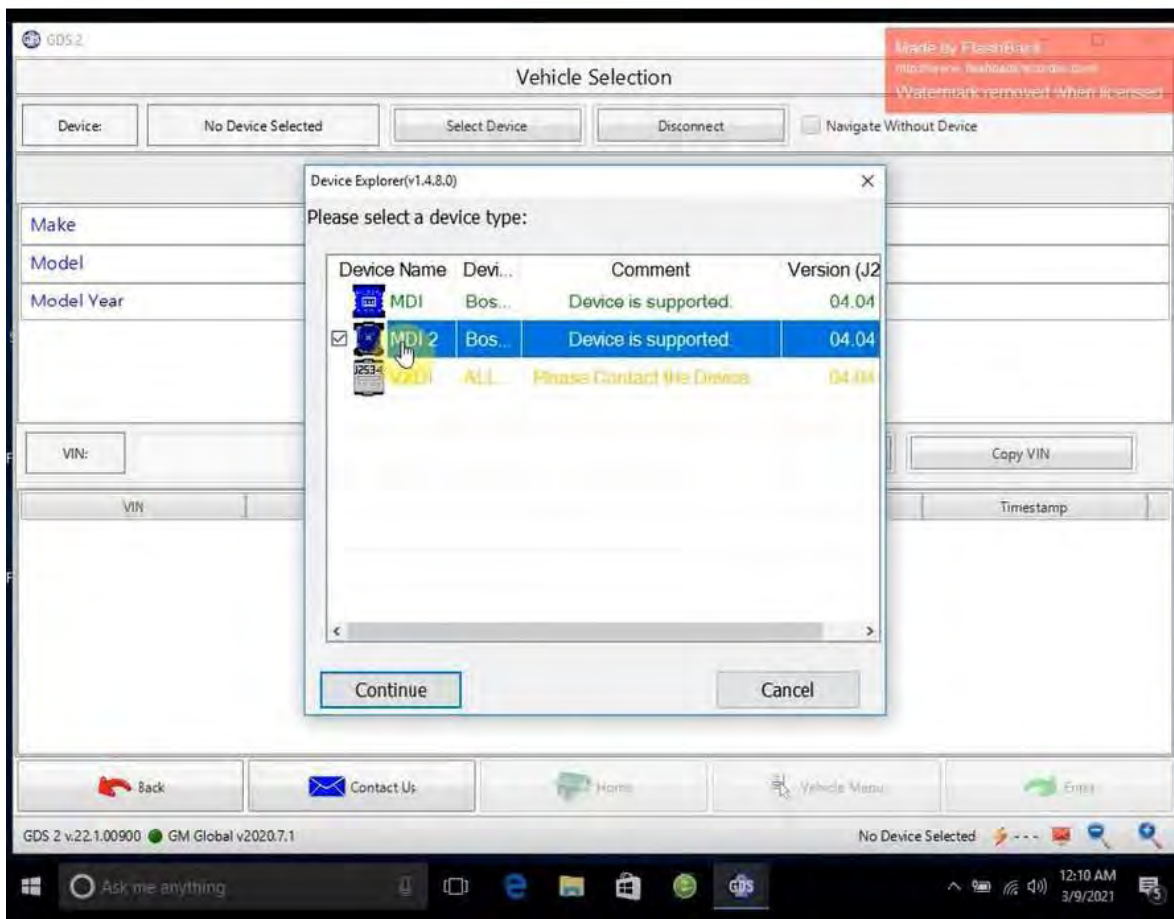
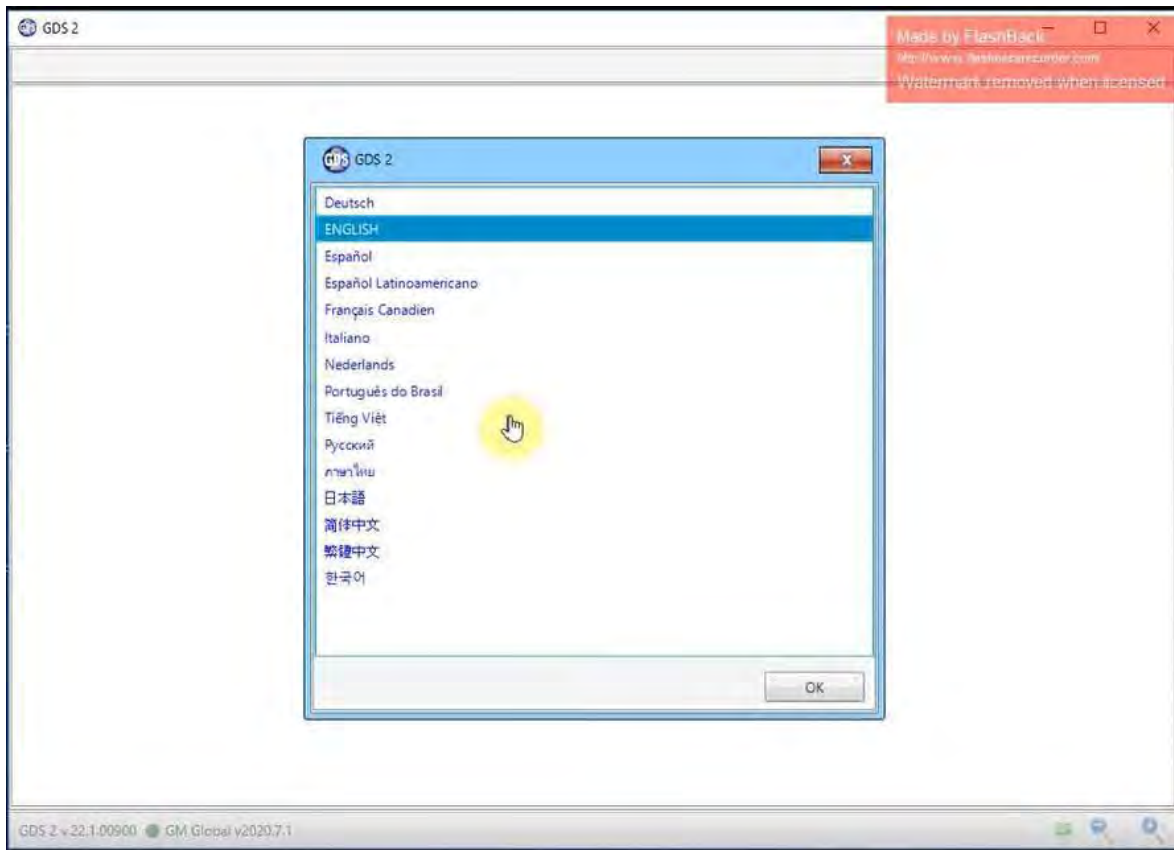
Open **GDS2Install** folder

Copy, paste and replace **GDS2.exe** from GDS2Install folder to Local Disk C:

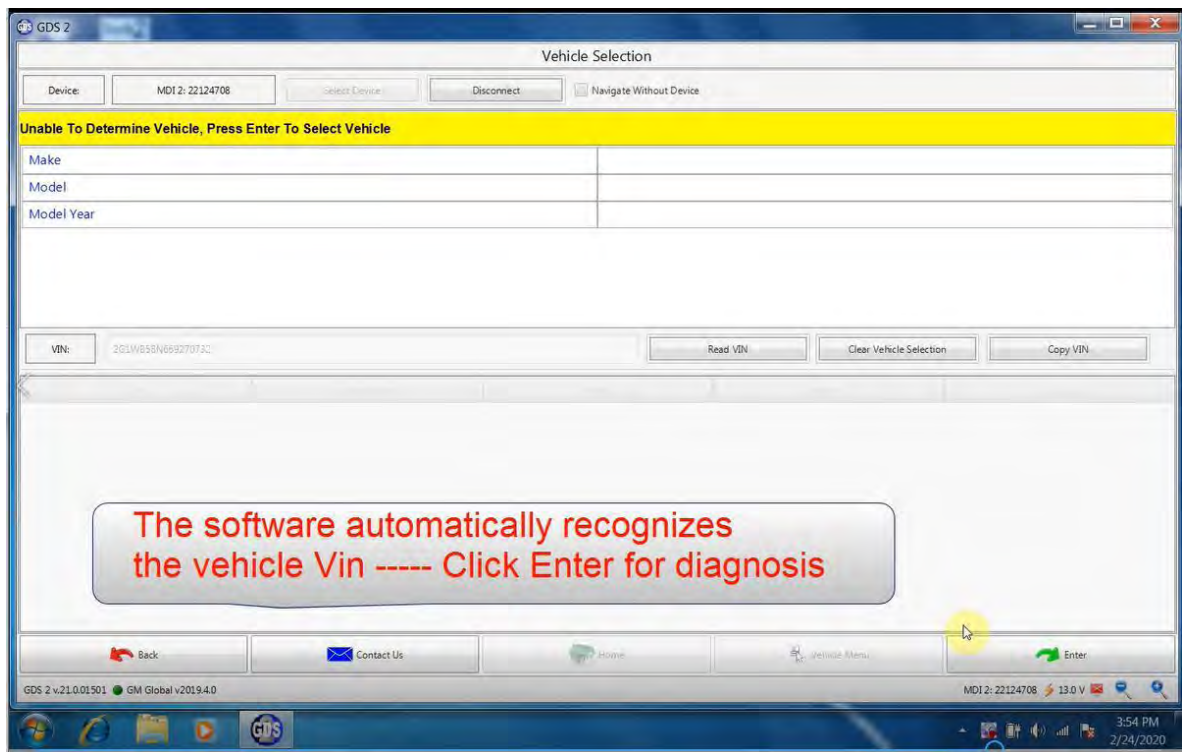




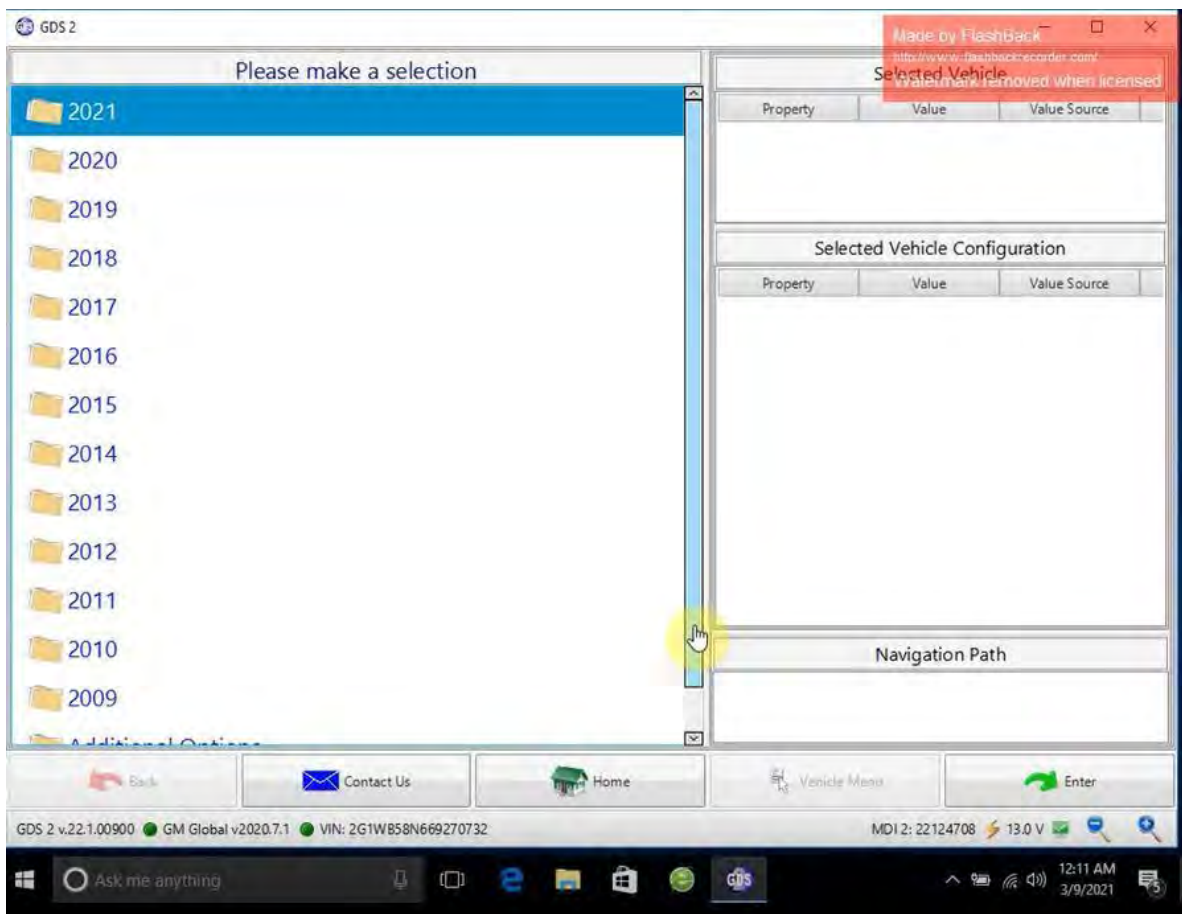
Then run GDS2 on C://

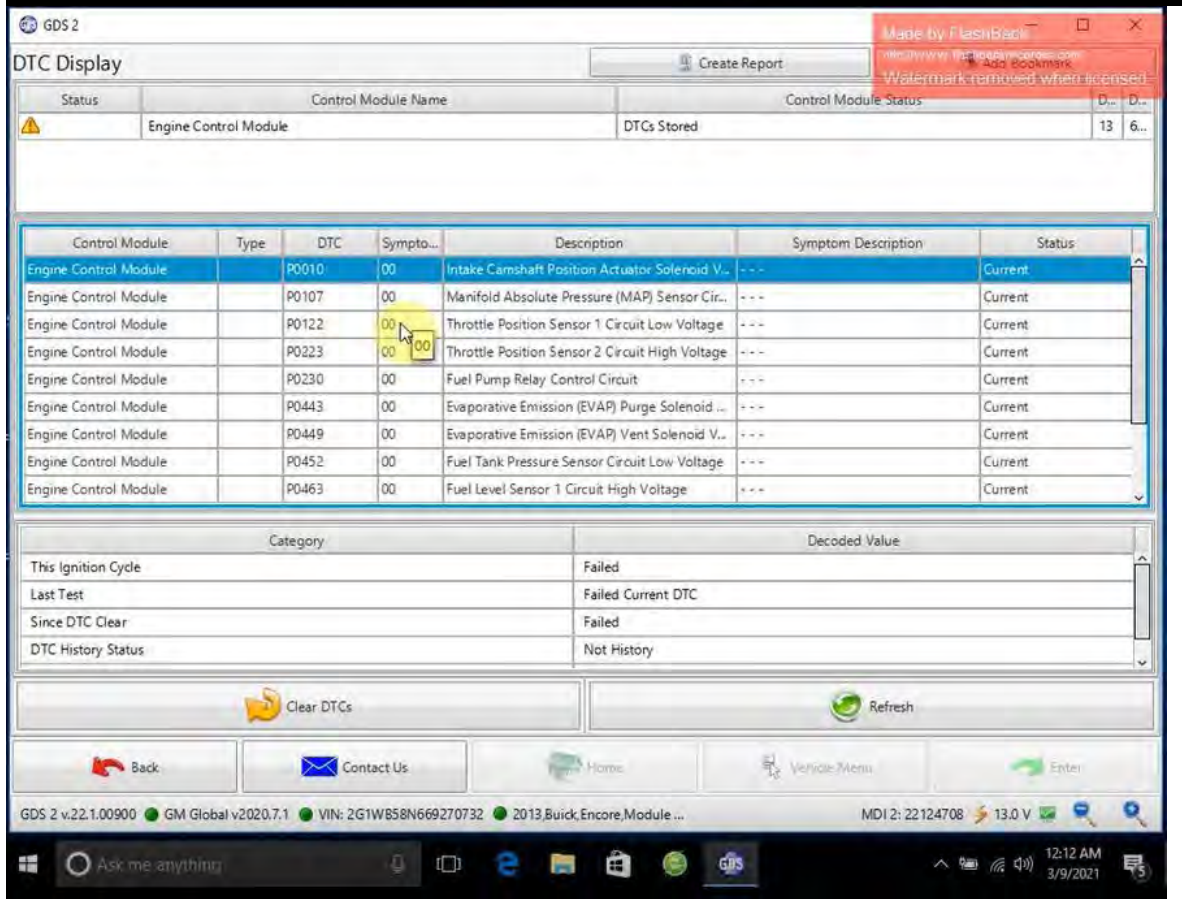
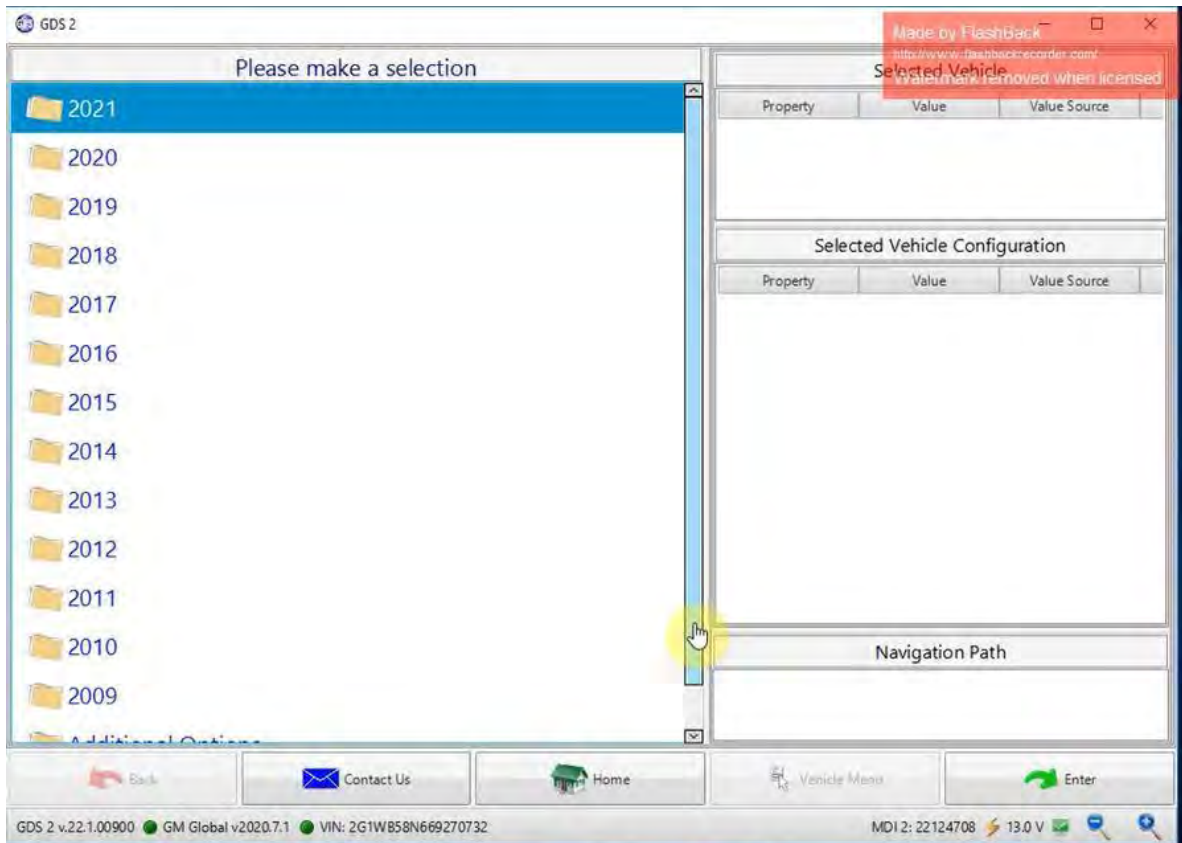


Select GDS2 language and device type: MDI 2



You can start test the car.

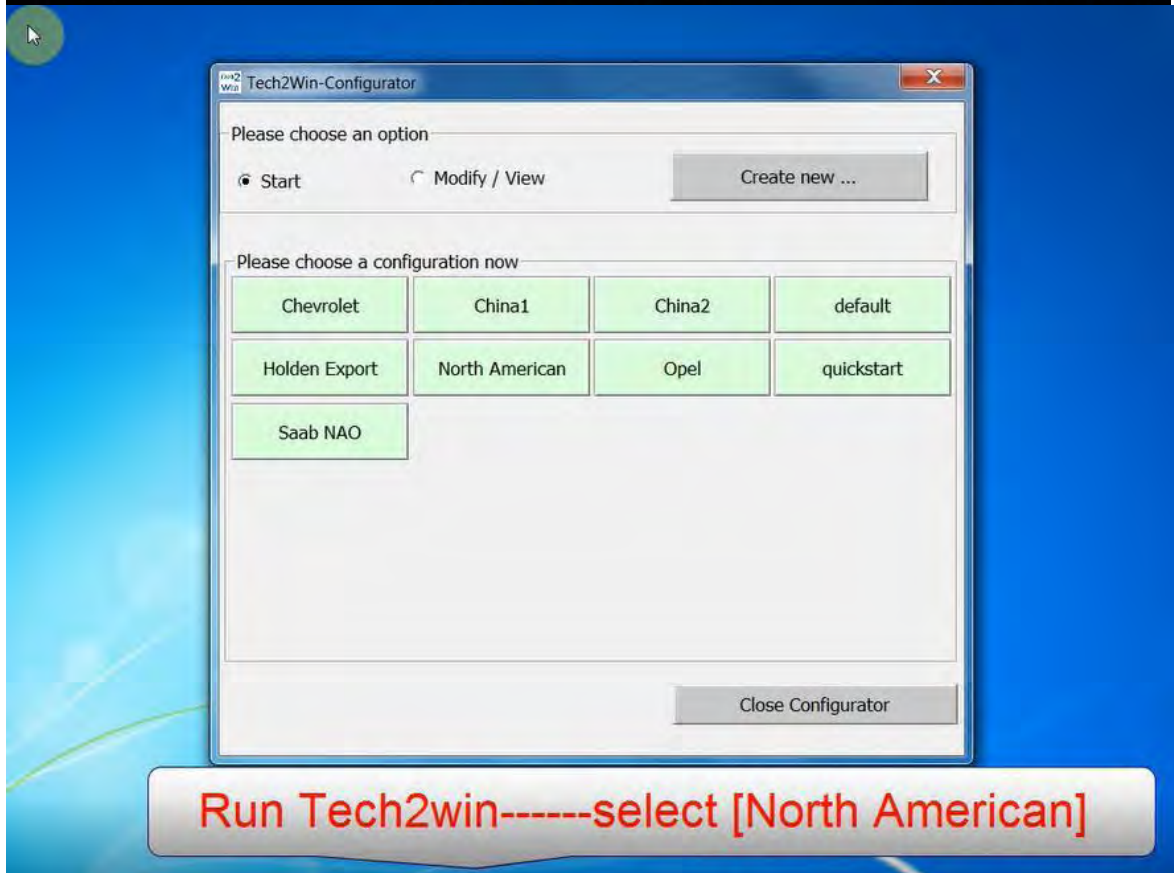
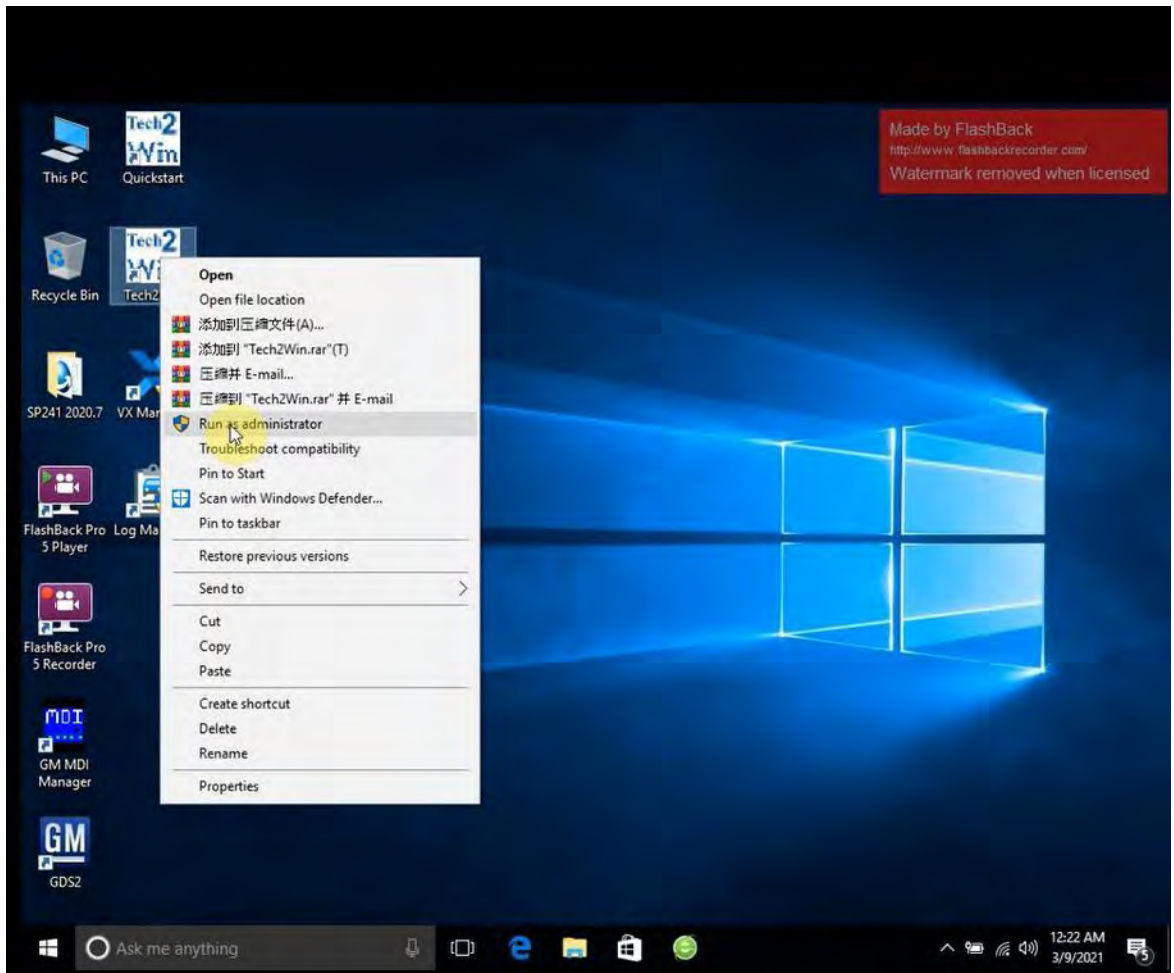




Run Tech2Win on desktop

Tech2win Display:





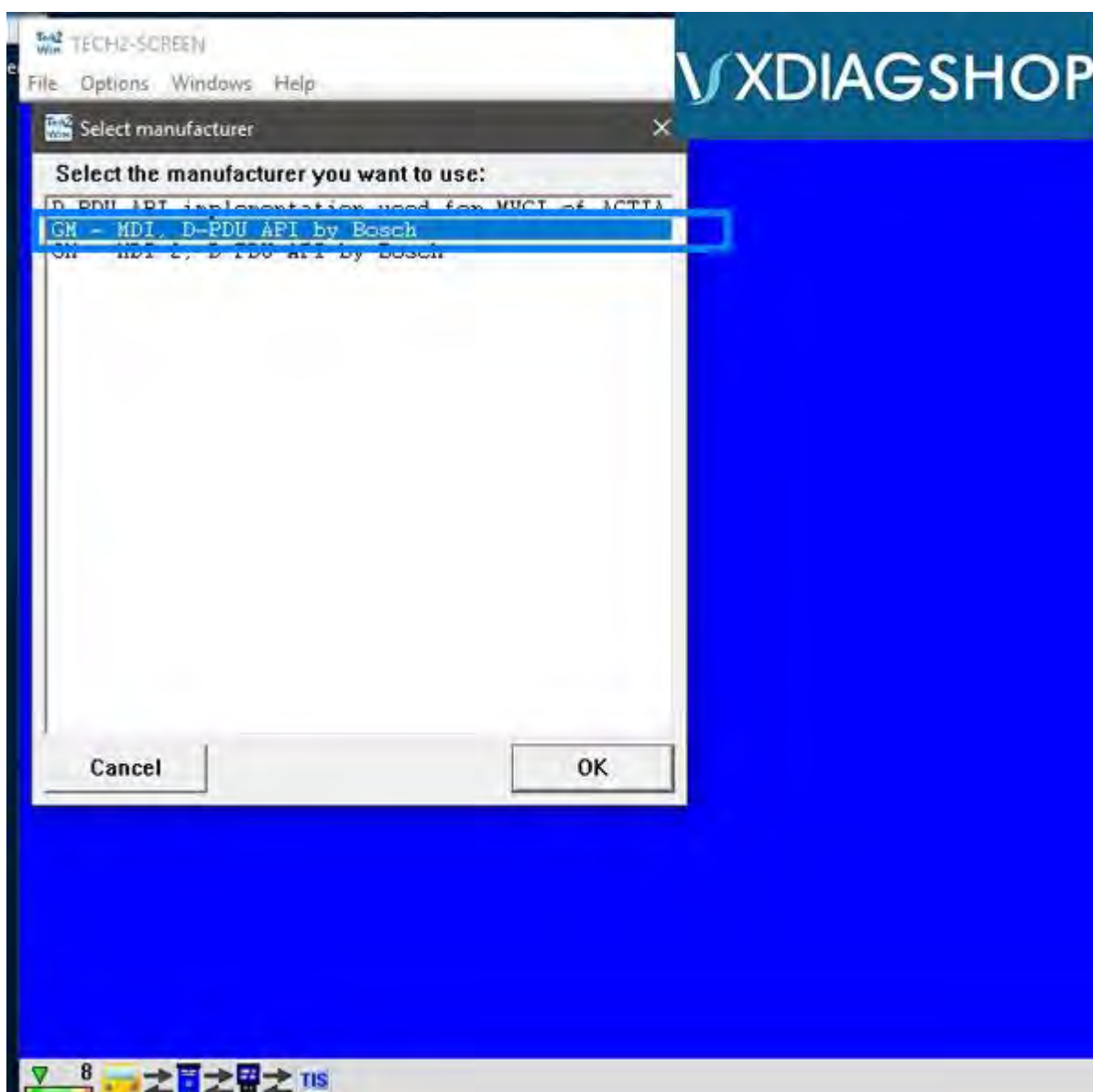
Right when the software starts, the Tech2Win-Configurator will pop up and ask you to choose which configuration you'd like. This would be based on your region or type of vehicle you're diagnosing. In our example, we choose [North America]. Based on your region, there will be different models available from the vehicle selection menu.

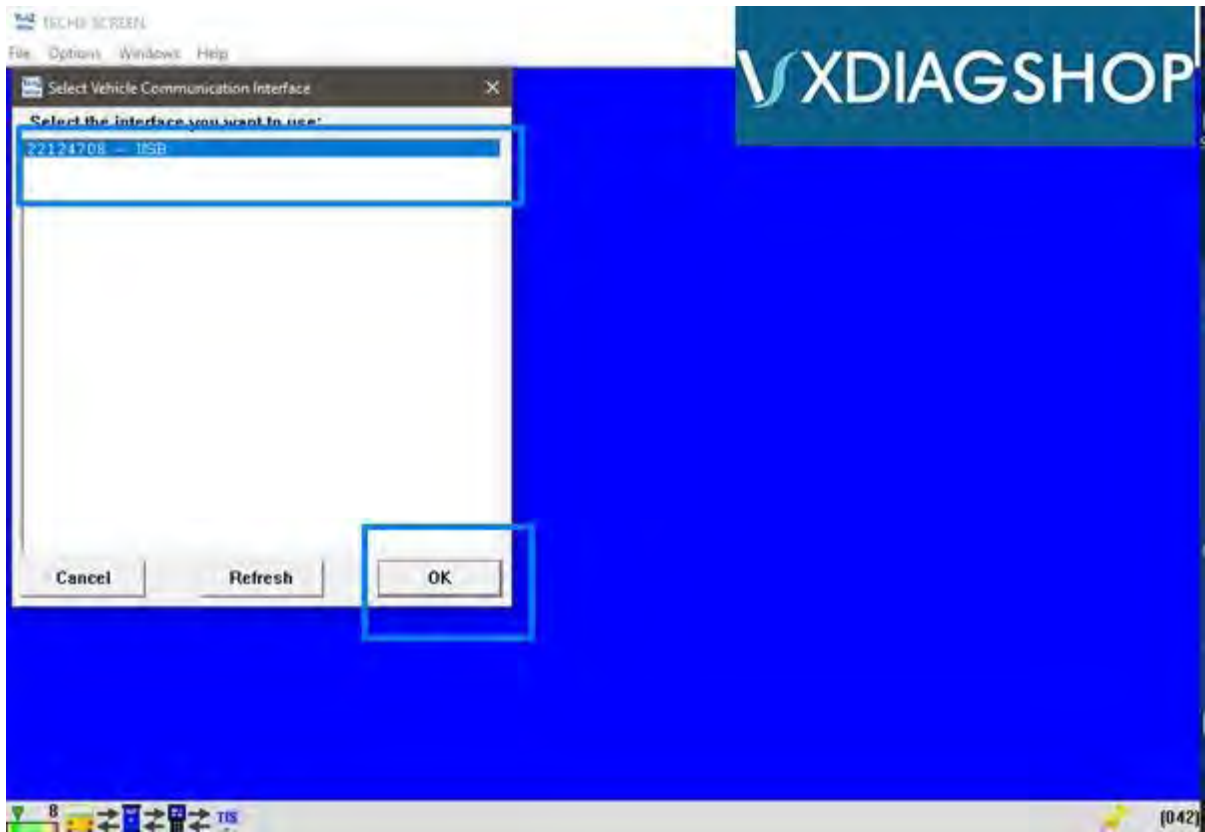
A box will pop up asking you to select the manufacturer or interface you'd like to use. The interfaces available will vary based on other types of diagnostic software you may have installed.

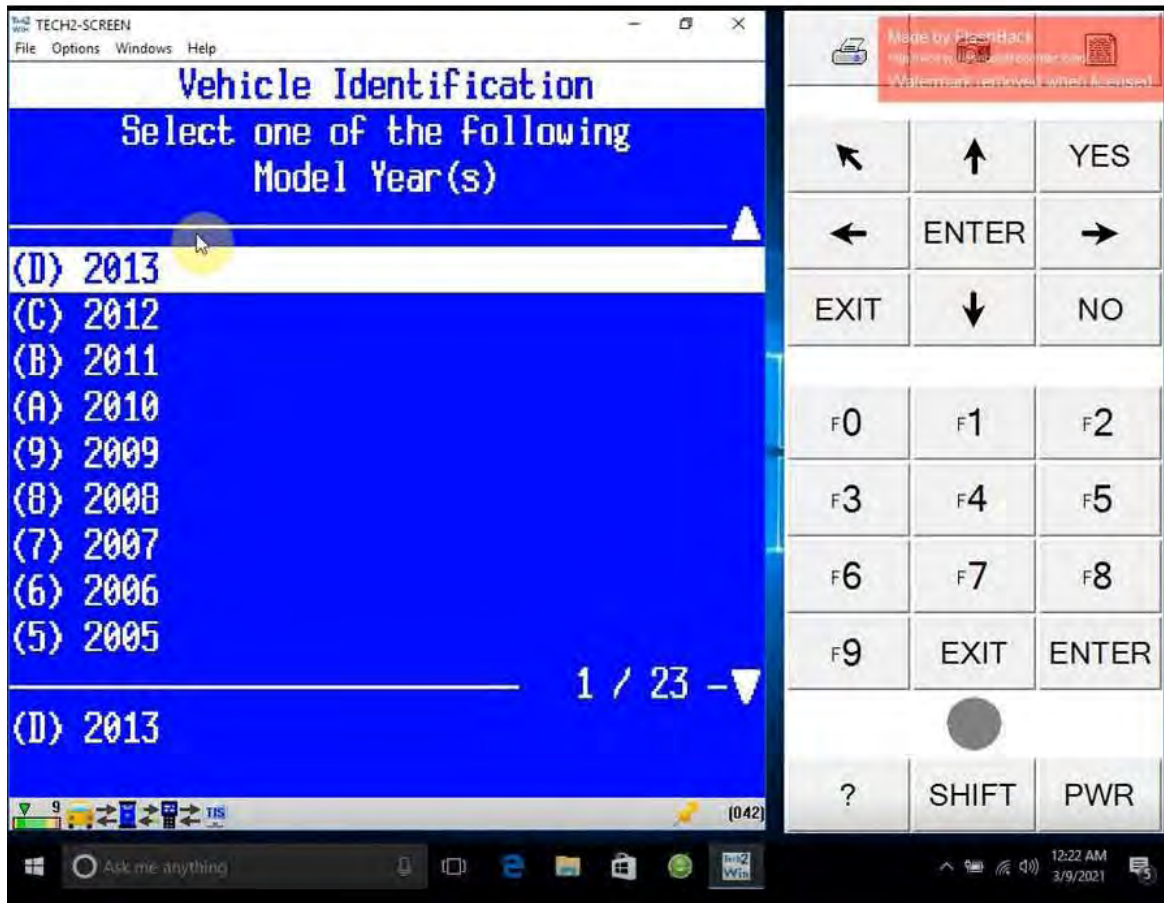
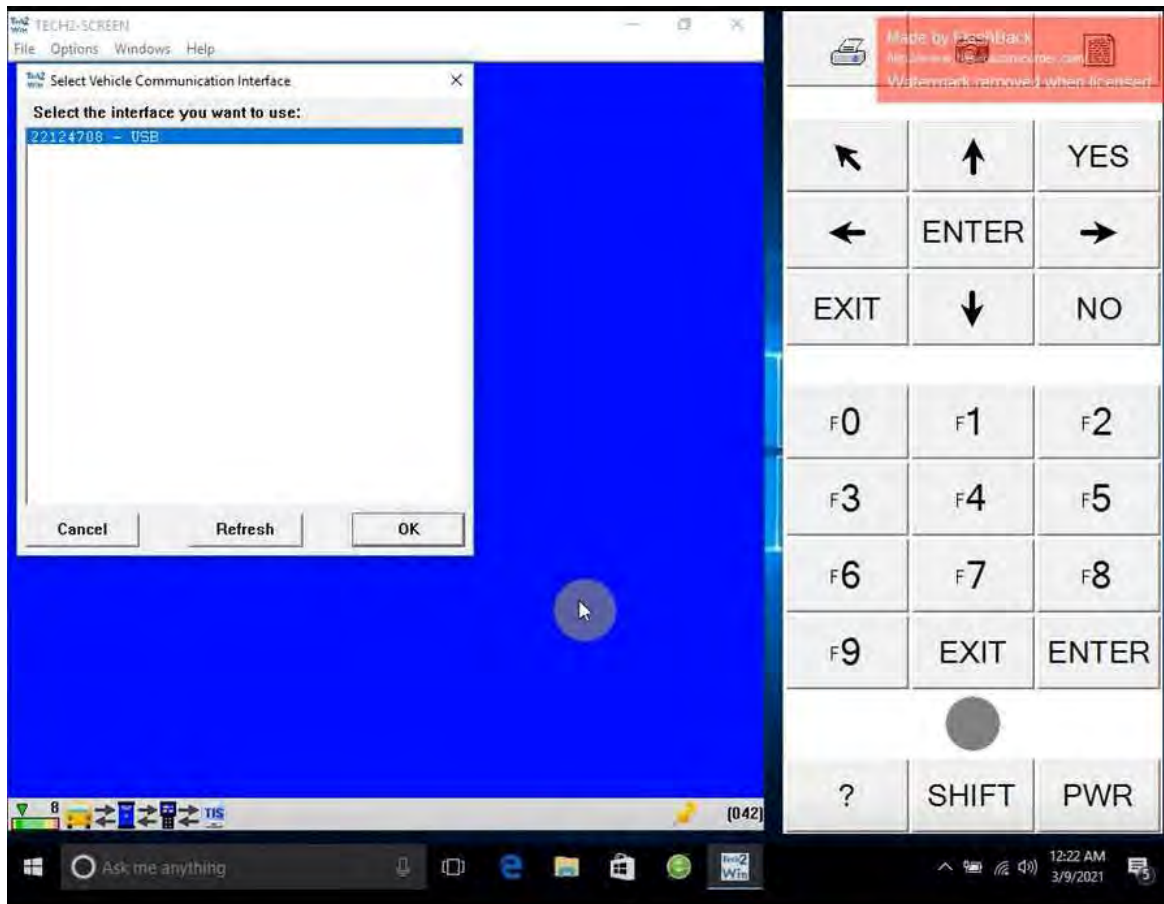
Select **[GM – MDI, D-PDU API by Bosch]**

Then Select the interface **[22124708 – USB]** and click **[OK]**

The software will start to load and then show you the main menu. Press [Enter] to continue.



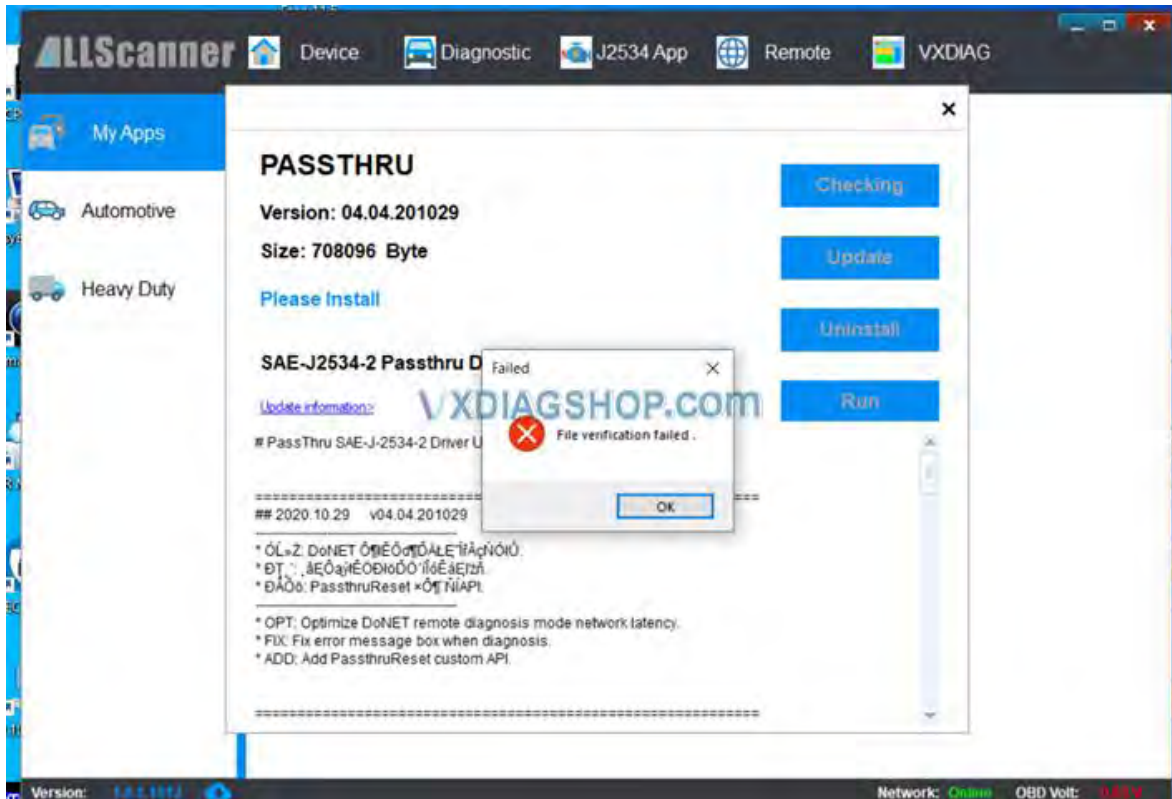




Part III

Common Errors & Solutions

1. "File Verification Failed"





Solution:

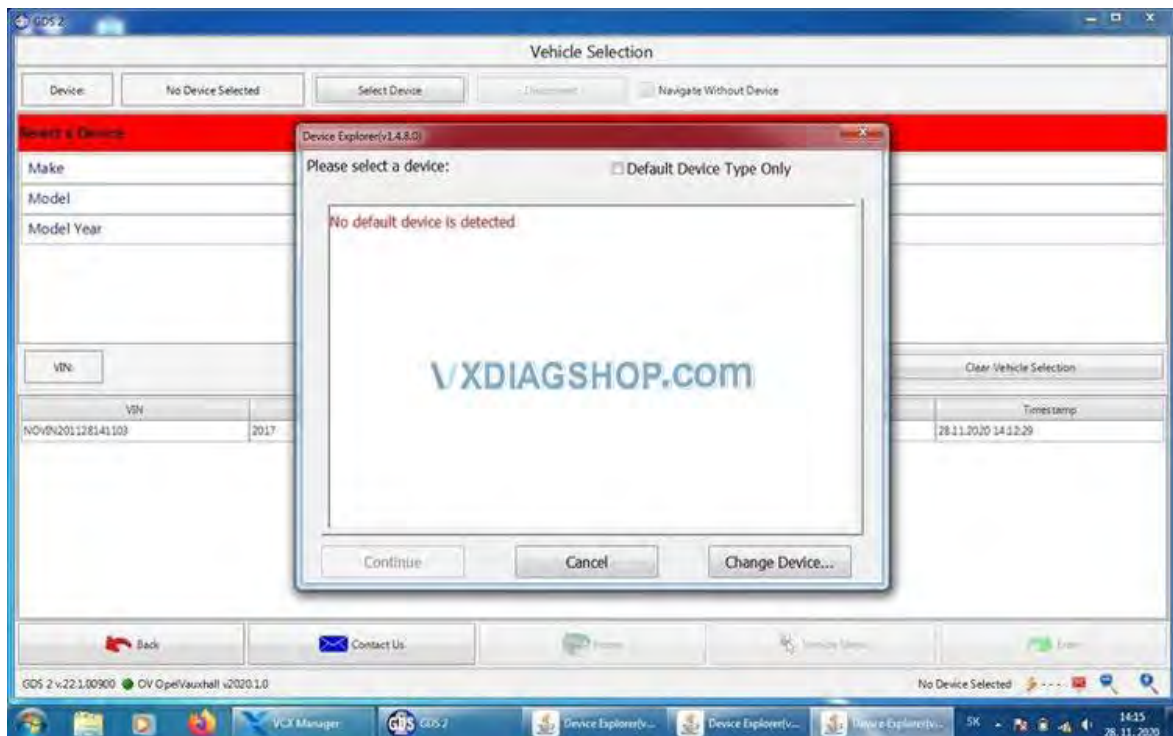
You did not install GM VCI driver.

GM VCI Driver can be downloaded here for free:

mega.nz/file/7ExUTB4T#w7DFUvy8xFEBM7QcvJiHLrXExMrmEI8-Oo2WKGsDkKc

Install driver and run again.

2. “No Default Device Detected”



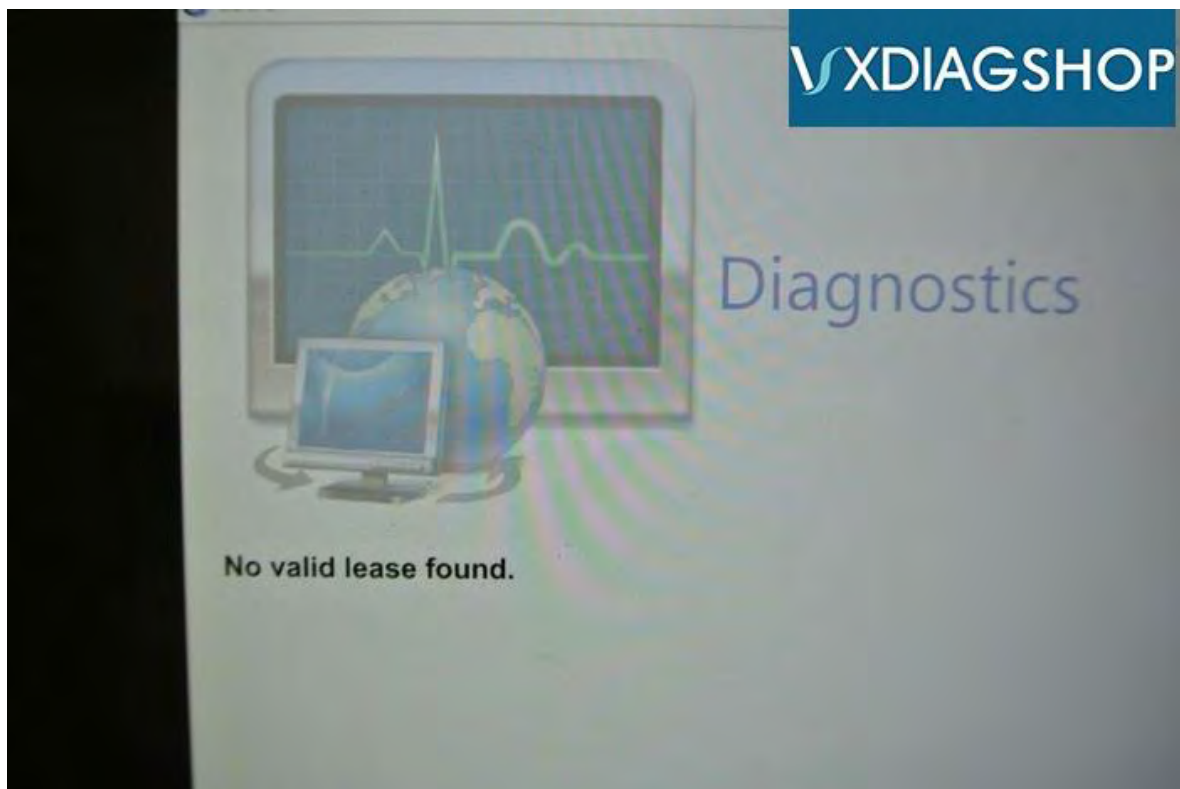
Solution:

The GDS2 driver was not installed properly.

Run VX manager, open Diagnostic tab, install GDS2/T2W driver.

Also check license, if license has expired, renew license.

3. “no valid lease found”



Solution:

DON'T start GDS2 software from VX Manager.

Run GDS2 from patch directly.

Download and install GDS2.exe to solve the problem.

https://mega.nz/file/ynJmEYqQ#sWEP6oZ9VMAIzE8eptMknZMDe4OcqAZHuWBxa8nA3_4

The error may also be caused by computer system and storage space. So DON'T install GDS2 on Windows Home operation system (Win7 Home, Win10 Home etc) and make sure your computer system has enough storage space (4GB+).

4. Cannot Find GDS2 Software**Solution:**

Similar problems have come up a few times with the installation of this vxdiag vcx nano. It's resulted from broken source files. Please re-download the software via the link in Part I and re-install it.

5. Software License Expire

Please download latest vx manager.

<https://mega.nz/file/vUAGyDxS#D0VWizy3huB8nK8dtL1FIPgfhMrJGo-isxAjirSlKjg>

After download, please install the new vx manager.

Then connect device to laptop, laptop connecting network, open new vx manager, click "Firmware" to update, then click "Update license" to renew.

All would be ok.

